

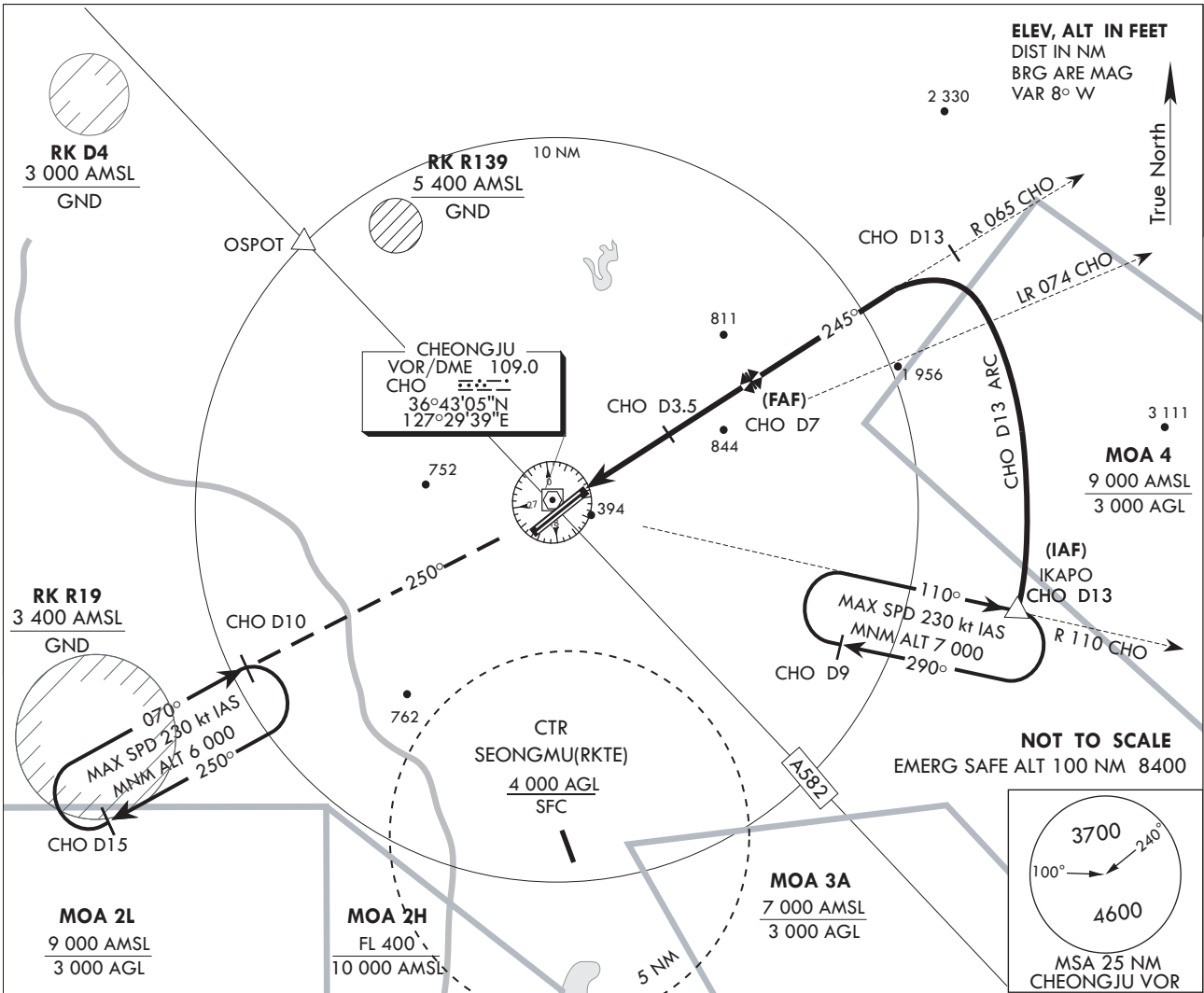
**INSTRUMENT
APPROACH
CHART**

AERODROME ELEV 192 ft
HEIGHTS RELATED TO
THR RWY 24R-ELEV 186 ft

JUNGWON APP 134.0 265.75
CHEONGJU TWR 118.7 126.2
236.6 249.6

**CHEONGJU/Cheongju INTL
VOR/DME
RWY 24R**

Note : Approach and circling-to-land under U.S.TERPS

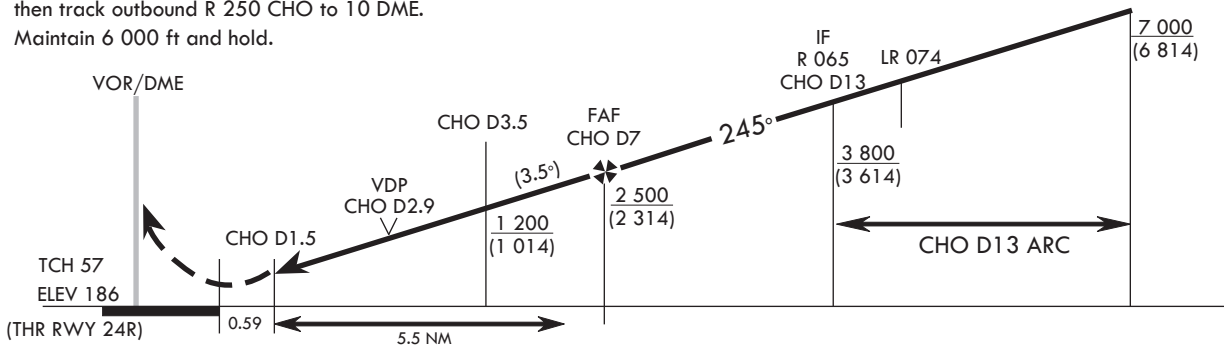


MISSED APPROACH

Climb on R 065 CHO to over CHO VOR,
then track outbound R 250 CHO to 10 DME.
Maintain 6 000 ft and hold.

Transition	ALT	14 000
Transition	LVL	FL 140

IAF
IKAPO
R 110 CHO/D13



CATEGORY	A	B	C	D
S-VOR/DME 24R	860/24 674 (700-1/2)		860-1 1/2 674 (700-1 1/2)	860-1 3/4 674 (700-1 3/4)
CIRCLING	860-1 668 (700-1)		860-2 668 (700-2)	1 200-3 1 008 (1 100-3)

Missed approach obstacle climb rate table

Rate of descent	V/V (fpm)	KNOTS					TO
		60	120	180	240	300	
		320	630	940	1 250	1 560	6 000

▼ * When ALS INOP, increase CAT A, B RVR to 50 and VIS to 1 mile, CAT C VIS to 2 miles, CAT D VIS to 2 1/4 miles.

Change : Information of fix name(NOSON → IKAPO).

INTENTIONALLY

LEFT

BLANK

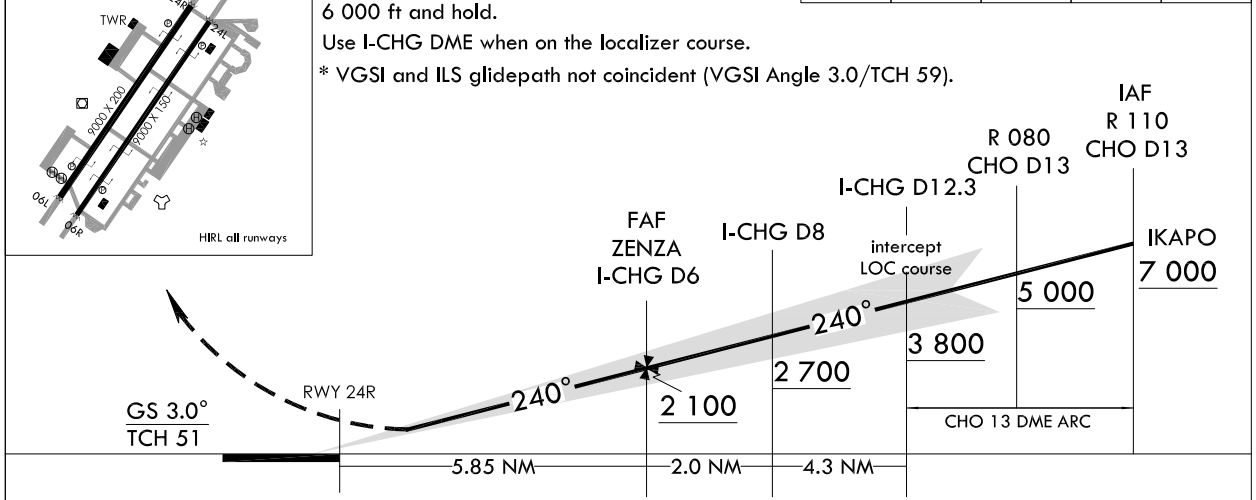
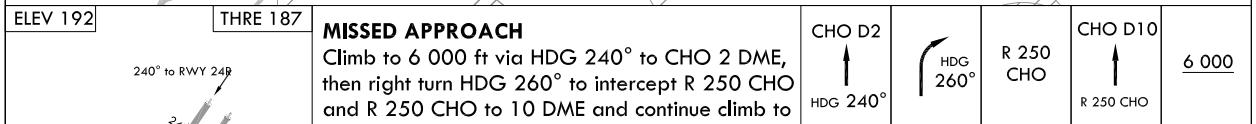
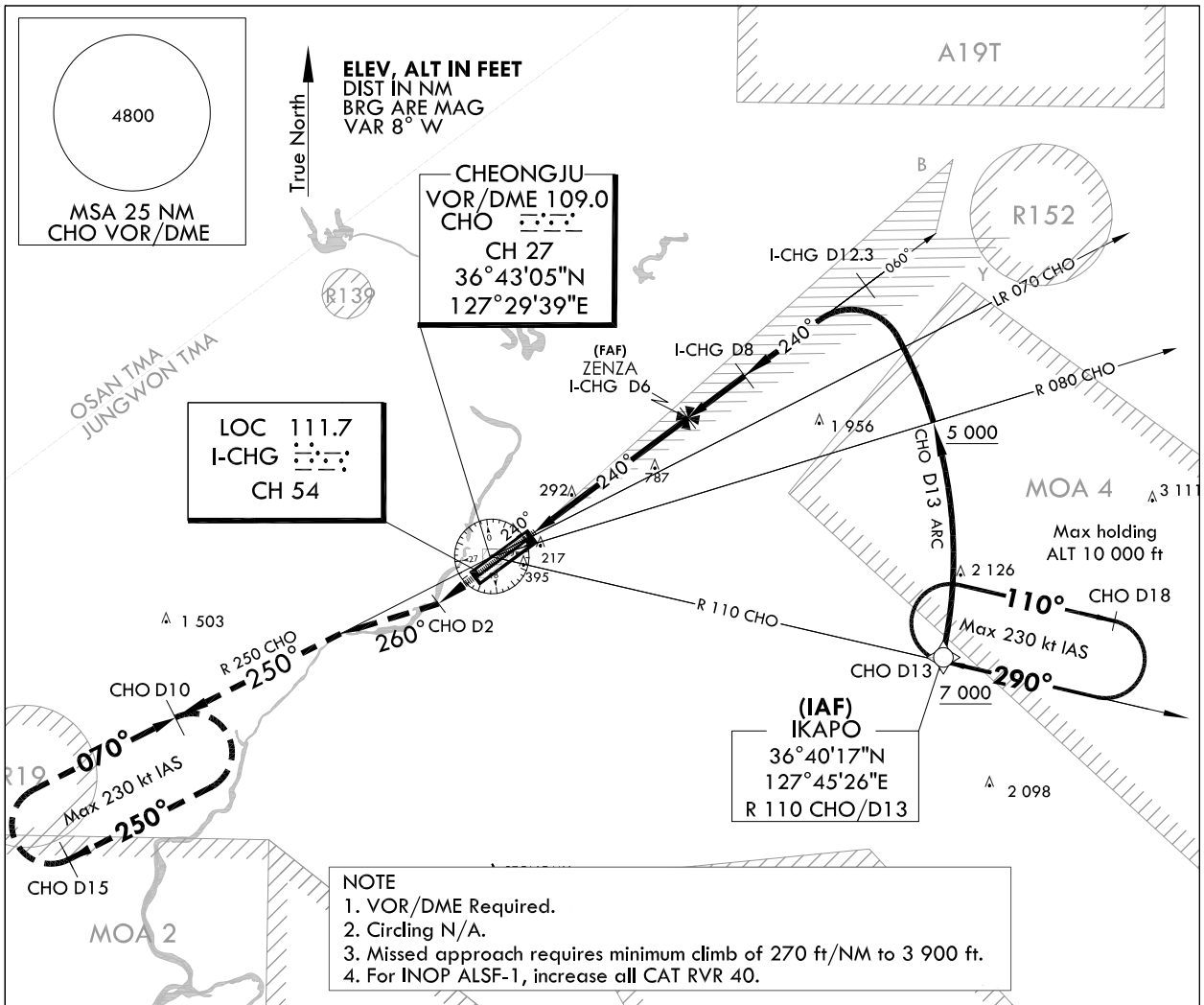
INSTRUMENT APPROACH CHART

AERODROME ELEV 192 ft
HEIGHTS RELATED TO
THR RWY 24R - ELEV 187 ft

JUNGWON APP 134.0 134.1
134.4
CHEONGJU TWR 118.7 126.2

CHEONGJU/Cheongju INTL(RKTU)
ILS Y
RWY 24R

Note : Approach and circling-to land under U.S TERPS.



CATEGORY		A	B	C	D	E
S-ILS 24R	ALS		387/24	200(200- $\frac{1}{2}$)		N/A
	ALS INOP		387/40	200(200- $\frac{3}{4}$)		N/A

Change : Information of fix name(NOSON → IKAPO).

INTENTIONALLY

LEFT

BLANK

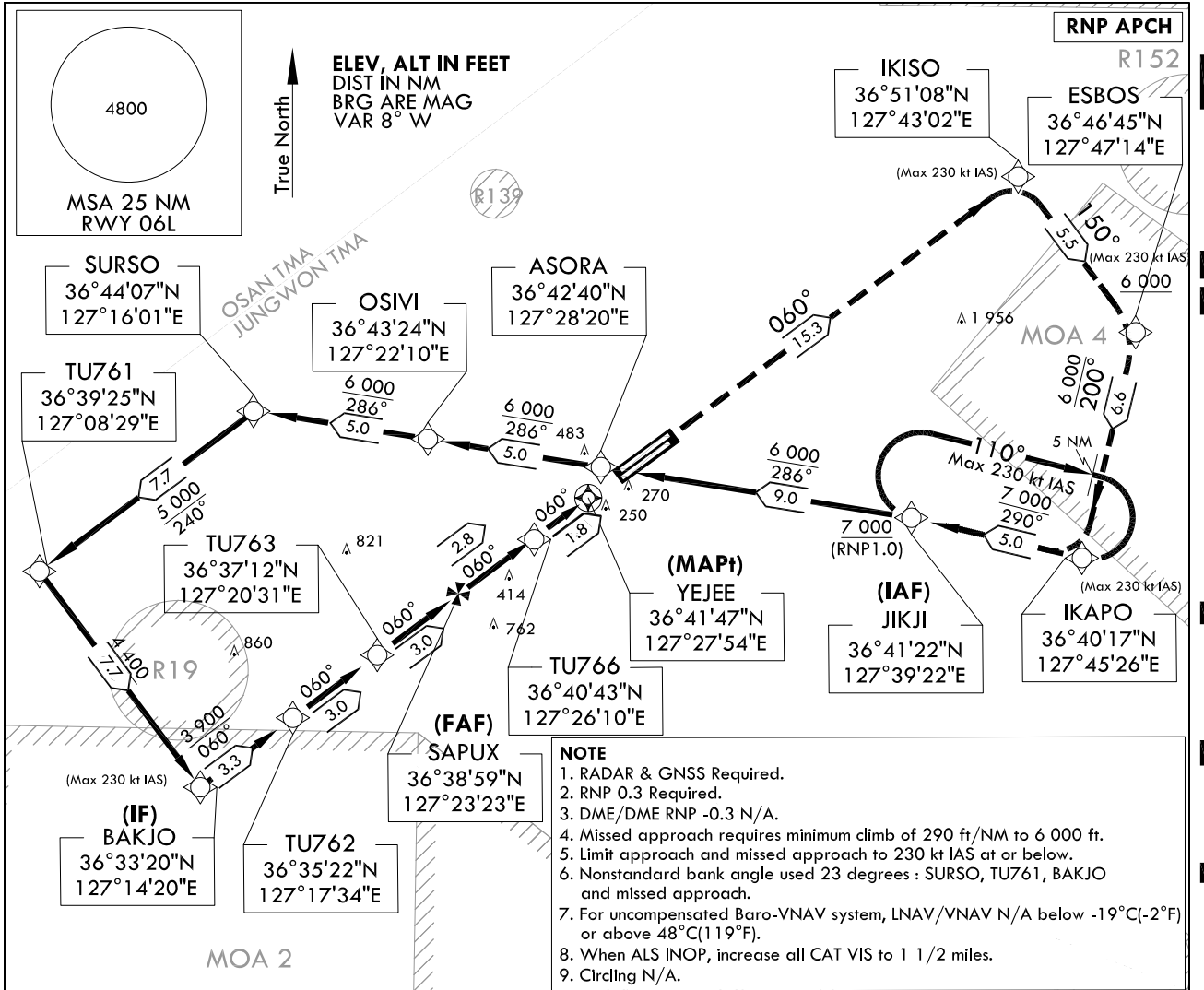
INSTRUMENT APPROACH CHART

AERODROME ELEV 192 ft
HEIGHTS RELATED TO
THR RWY 06L - ELEV 167 ft

JUNGWON APP 134.0 134.1
134.4
CHEONGJU TWR 118.7 126.2

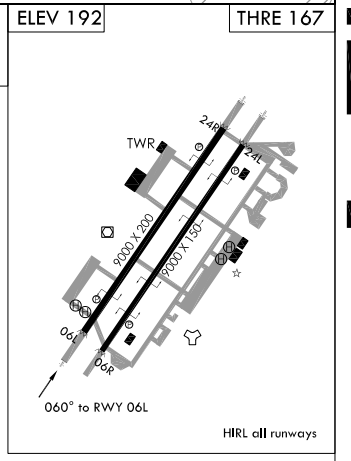
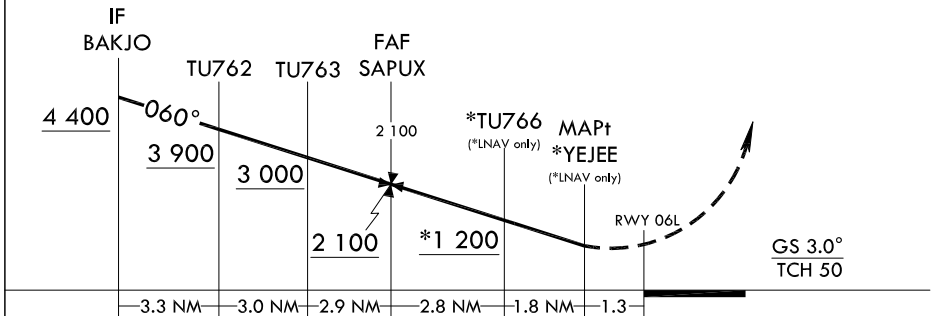
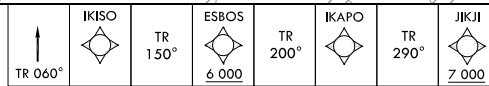
CHEONGJU/Cheongju INTL(RKTU)
RNP RWY 06L

Note : Approach under U.S TERPS.



- NOTE**
1. RADAR & GNSS Required.
 2. RNP 0.3 Required.
 3. DME/DME RNP -0.3 N/A.
 4. Missed approach requires minimum climb of 290 ft/NM to 6 000 ft.
 5. Limit approach and missed approach to 230 kt IAS or below.
 6. Nonstandard bank angle used 23 degrees : SURSO, TU761, BAKJO and missed approach.
 7. For uncompensated Baro-VNAV system, LNAV/VNAV N/A below -19°C(-2°F) or above 48°C(119°F).
 8. When ALS INOP, increase all CAT VIS to 1 1/2 miles.
 9. Circling N/A.

MISSED APPROACH
Climb to 7 000 ft via on track 060° to IKISO, then track 150° to cross ESBOS at or above 6 000 ft, then track 200° to IKAPO, then track 290° to JIKJI and hold.



CATEGORY		A	B	C	D	E
LNAV/VNAV DA	ALS		625-1 $\frac{1}{4}$	458(500-1 $\frac{1}{4}$)		N/A
	ALS INOP		625-1 $\frac{1}{2}$	458(500-1 $\frac{1}{2}$)		N/A
LNAV MDA	ALS		620-1 $\frac{1}{4}$	453(500-1 $\frac{1}{4}$)		N/A
	ALS INOP		620-1 $\frac{1}{2}$	453(500-1 $\frac{1}{2}$)		N/A
CIRCLING		N/A				

Change : Information of fix names.

CHEONGJU/Cheongju INTL(RKTU)
RNP RWY 06L

AERONAUTICAL DATA TABULATION

Instrument Approach Procedure Coding Tables

RNP RWY 06L

Serial Number	Path Descriptor	Waypoint Identifier	Fly-over	Course/Track °M(°T)	Distance (NM)	Turn direction	Altitude (ft)	Speed (kt)	Coordinates	VPA/TCH	Navigation specification	Remarks
001	-	JIKJI	-	-	-	-	+7 000	-	36°41'21.7"N 127°39'22.1"E	-	RNAV 1	IAF
002	TF	ASORA	-	286 (278.5)	9.0	-	+6 000	-	36°42'40.4"N 127°28'19.6"E	-	RNAV 1	-
003	TF	OSVI	-	286 (278.3)	5.0	-	+6 000	-	36°43'23.8"N 127°22'10.3"E	-	RNAV 1	-
004	TF	SURSO	-	286 (278.3)	5.0	-	+6 000	-	36°44'06.8"N 127°16'01.0"E	-	RNAV 1	-
005	TF	TU761	-	240 (232.3)	7.7	-	+5 000	-	36°39'25.0"N 127°08'29.0"E	-	RNAV 1	-
006	TF	BAKJO	-	150 (142.2)	7.7	-	+4 400	-230	36°33'20.1"N 127°14'19.5"E	-	RNAV 1	-
007	TF	TU762	-	060 (052.1)	3.3	-	+3 900	-	36°35'21.9"N 127°17'33.6"E	-	RNAV 1	IF
008	TF	TU763	-	060 (052.3)	3.0	-	+3 000	-	36°37'12.1"N 127°20'30.5"E	-	RNAV 1	-
009	TF	SAPUX	-	060 (052.3)	2.9	-	+2 100	-	36°38'59.3"N 127°23'22.9"E	-	RNP 0.3	FAF
010	TF	TU766	-	060 (052.4)	2.8	-	+1 200	-	36°40'42.9"N 127°26'09.9"E	-	RNP 0.3	(LNAV only)
011	TF	YEJEE	Y	060 (052.4)	1.8	-	+620	-	36°41'47.4"N 127°27'53.8"E	-	RNP 0.3	MAP(LNAV only)
012	TF	IKISO	-	060 (052.4)	15.3	-	-	-230	36°51'08.3"N 127°43'01.8"E	-	RNAV 1	CG 290 ft/NM to 6 000 ft
013	TF	ESROS	-	150 (142.4)	5.5	-	+6 000	-230	36°46'44.7"N 127°47'14.2"E	-	RNAV 1	-
014	TF	IKAPO	-	200 (192.6)	6.6	-	-	-230	36°40'16.6"N 127°45'26.2"E	-	RNAV 1	-
015	TF	JIKJI	-	290 (282.5)	5.0	-	@7 000	-230	36°41'21.7"N 127°39'22.1"E	-	RNAV 1	-
016	HM	JIKJI	-	290 (282.5)	5.0	R	-	-	36°41'21.7"N 127°39'22.1"E	-	-	-

Change : Information of fix names.

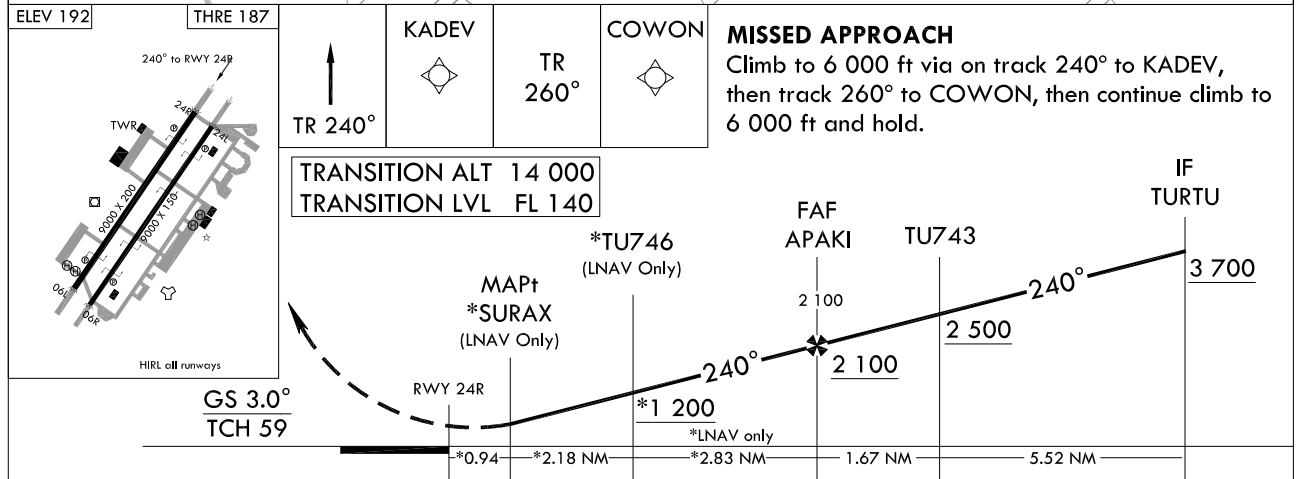
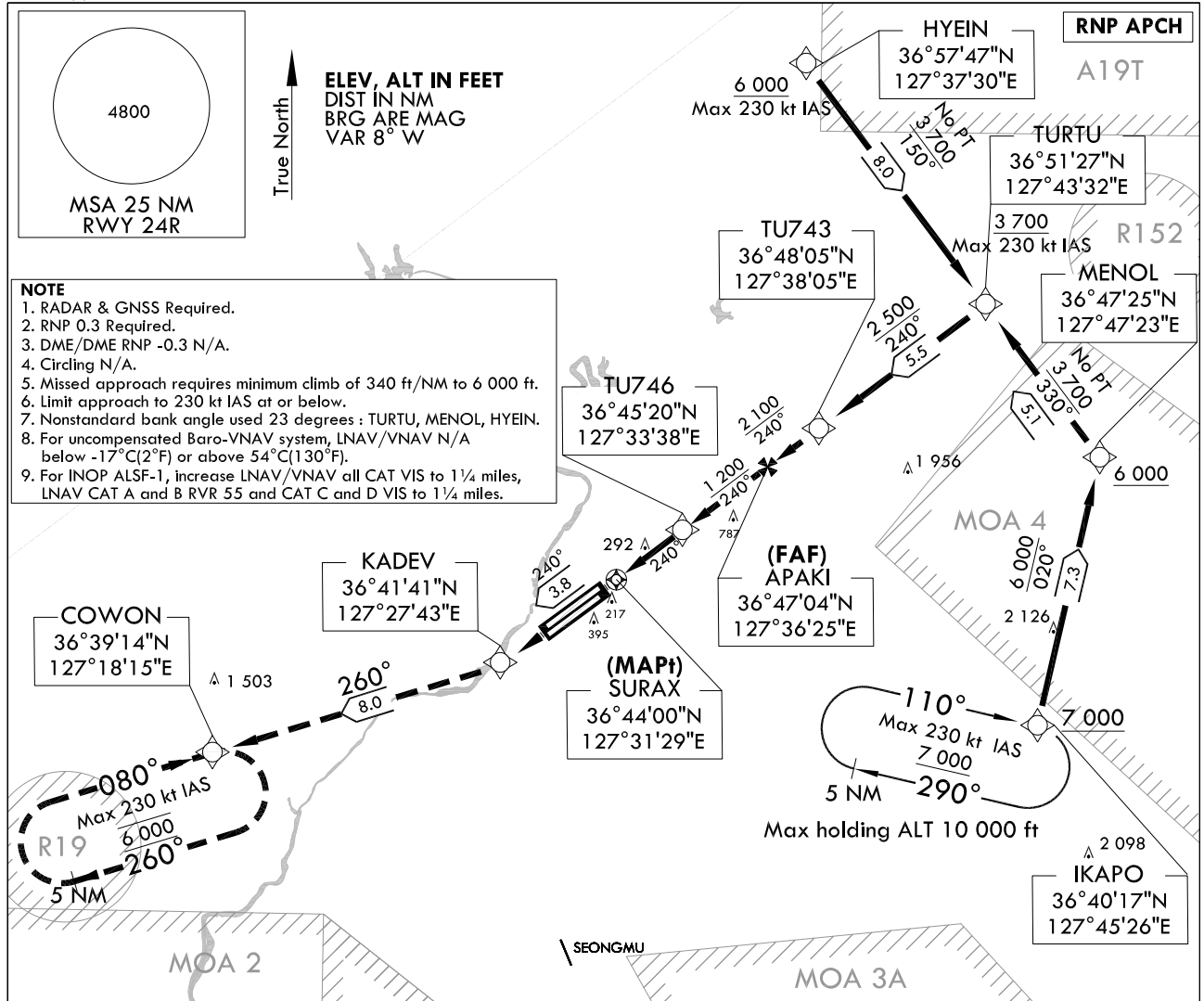
**INSTRUMENT
APPROACH
CHART**

AERODROME ELEV 192 ft
HEIGHTS RELATED TO
THR RWY 24R - ELEV 187 ft

JUNGWON APP 134.0 134.1
134.4
CHEONGJU TWR 118.7 126.2

**CHEONGJU/Cheongju INTL(RKTU)
RNP RWY 24R**

Note : Approach under U.S. TERPS.



CATEGORY		A	B	C	D	E
LNAV/VNAV DA	ALS		602/40	415(500- $\frac{7}{8}$)		N/A
	ALS INOP		602/1 $\frac{1}{4}$	415(500-1 $\frac{1}{4}$)		N/A
LNAV MDA	ALS		620/40	433(500- $\frac{3}{4}$)		N/A
	ALS INOP	620/55	433(500-1)		620-1 $\frac{1}{4}$	433(500-1 $\frac{1}{4}$)
CIRCLING		N/A				

Change : Information of coordinates for SURAX.

CHEONGJU/Cheongju INTL(RKTU)
RNP RWY 24R

AERONAUTICAL DATA TABULATION

Instrument Approach Procedure Coding Tables

RNP RWY 24R - via IKAPO to TURTU(IF)

Serial Number	Path Descriptor	Waypoint Identifier	Fly-over	Course/Track °M(°T)	Distance (NM)	Turn direction	Altitude (ft)	Speed (kt)	Coordinates	VPA/TCH	Navigation specification	Remarks
001	-	IKAPO	-	-	-	-	+7 000	-	36°40'16.6"N 127°45'26.2"E	-	RNAV 1	IAF
002	TF	MENOL	-	020 (01 2.32)	7.3	-	+6 000	-	36°47'25.1"N 127°47'22.5"E	-	RNAV 1	-
003	TF	TURTU	-	330 (322.61)	5.1	-	+3 700	-230	36°51'27.0"N 127°43'32.3"E	-	RNAV 1	IF

RNP RWY 24R - via HYEIN to TURTU(IF)

Serial Number	Path Descriptor	Waypoint Identifier	Fly-over	Course/Track °M(°T)	Distance (NM)	Turn direction	Altitude (ft)	Speed (kt)	Coordinates	VPA/TCH	Navigation specification	Remarks
001	TF	HYEIN	-	-	-	-	+6 000	-230	36°57'47.1"N 127°37'29.7"E	-	RNAV 1	IAF
002	TF	TURTU	-	150 (142.51)	8.0	-	+3 700	-230	36°51'27.0"N 127°43'32.3"E	-	RNAV 1	IF

RNP RWY 24R - via TURTU(IF) to MAHF

Serial Number	Path Descriptor	Waypoint Identifier	Fly-over	Course/Track °M(°T)	Distance (NM)	Turn direction	Altitude (ft)	Speed (kt)	Coordinates	VPA/TCH	Navigation specification	Remarks
001	TF	TURTU	-	-	-	-	+3 700	-230	36°51'27.0"N 127°43'32.3"E	-	RNAV 1	IF
002	TF	TU743	-	240 (232.56)	5.5	-	+2 500	-	36°48'05.3"N 127°38'04.9"E	-	RNAV 1	-
003	TF	APAKI	-	240 (232.51)	1.7	-	+2 100	-	36°47'03.7"N 127°36'25.0"E	-	RNP 0.3	FAF
004	TF	TU746	-	240 (232.49)	2.8	-	+1 200	-	36°45'20.2"N 127°33'37.6"E	-	RNP 0.3	LNAV only
005	TF	SURAX	Y	240 (232.46)	2.2	-	+620	-	36°44'00.5"N 127°31'28.6"E	-	RNP 0.3	MAP(LNAV only)
006	TF	KADEV	-	240 (232.44)	3.8	-	-	-	36°41'40.5"N 127°27'42.6"E	-	RNAV 1	CG 340 ft/NM to 6 000 ft
007	TF	COWON	-	260 (252.25)	8.0	-	6 000	-	36°39'13.6"N 127°18'14.5"E	-	RNAV 1	-
008	HM	IKAPO	-	110 (102.15)	5.0	-	+7 000	-	36°40'16.6"N 127°45'26.2"E	-	-	-
009	HM	COWON	-	080 (072.25)	5.0	-	@6 000	-	36°39'13.6"N 127°18'14.5"E	-	-	-

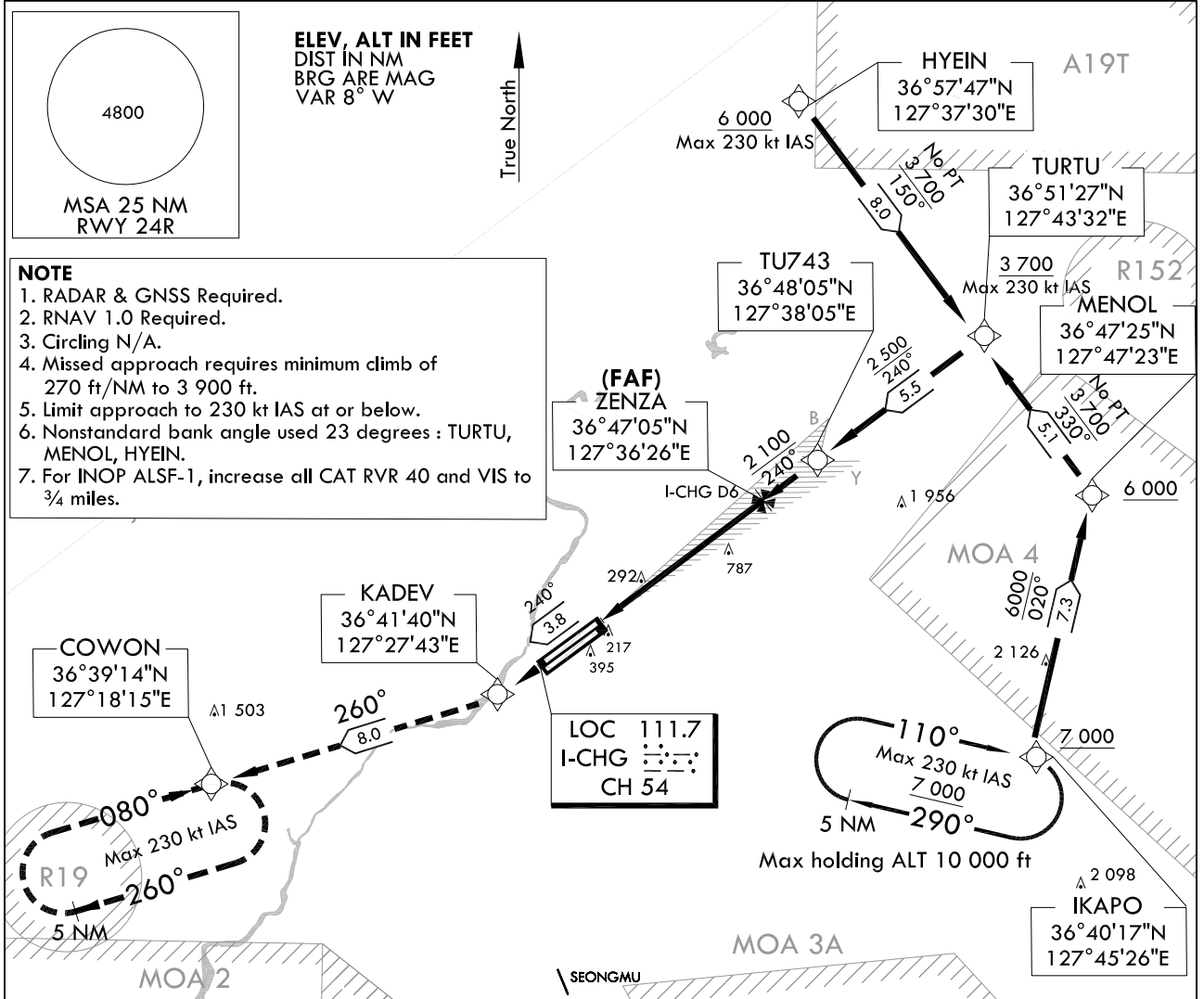
INSTRUMENT APPROACH CHART

AERODROME ELEV 192 ft
HEIGHTS RELATED TO
THR RWY 24R - ELEV 187 ft

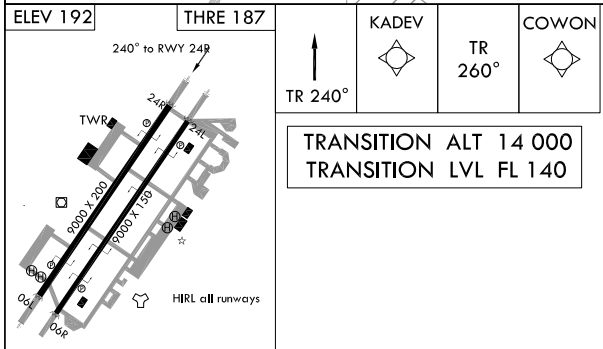
JUNGWON APP 134.0 134.1
134.4
CHEONGJU TWR 118.7 126.2

CHEONGJU/Cheongju INTL(RKTU)
ILS Z
RWY 24R

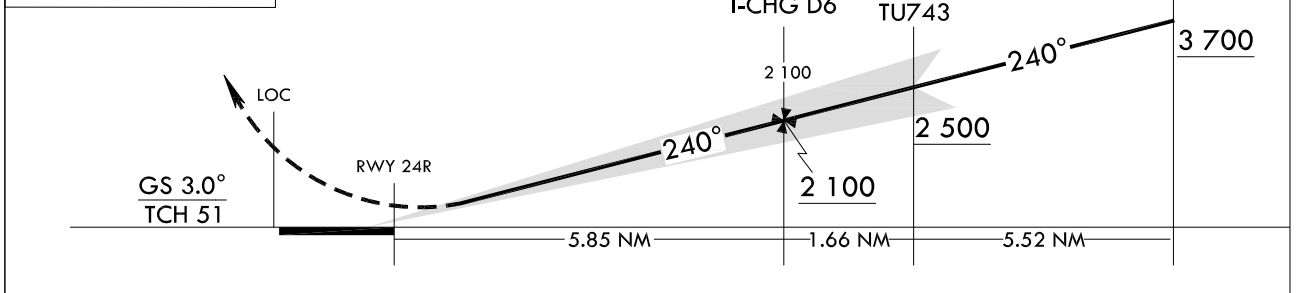
Note : Approach and circling-to land under U.S TERPS.



- NOTE**
1. RADAR & GNSS Required.
 2. RNAV 1.0 Required.
 3. Circling N/A.
 4. Missed approach requires minimum climb of 270 ft/NM to 3 900 ft.
 5. Limit approach to 230 kt IAS at or below.
 6. Nonstandard bank angle used 23 degrees : TURTU, MENOL, HYEIN.
 7. For INOP ALSF-1, increase all CAT RVR 40 and VIS to 3/4 miles.



MISSED APPROACH
Climb on track 240° to KADEV, then track 260° to COWON, then continue climb to 6 000 ft and hold.
VGSI and ILS glidepath not coincident (VGSI Angle 3.0/TCH 59).



CATEGORY		A	B	C	D	E
S-ILS 24R	ALS		387/24	200(200- $\frac{1}{2}$)		N/A
	ALS INOP		387/40	200(200- $\frac{3}{4}$)		N/A

Change : Information of coordinates for MENOL.

INTENTIONALLY

LEFT

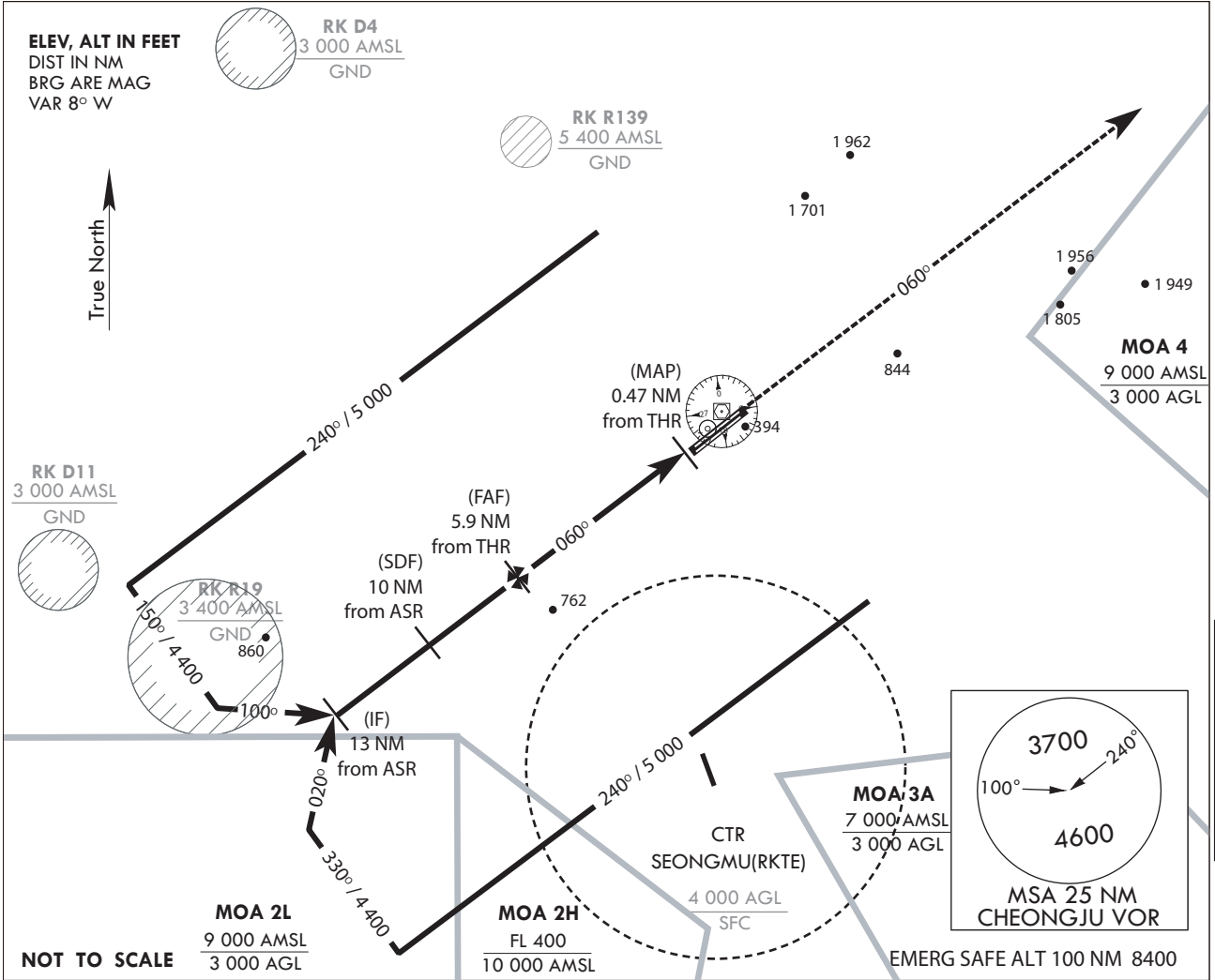
BLANK

INSTRUMENT APPROACH CHART
 AERODROME ELEV **192 ft**
 HEIGHTS RELATED TO
 THE RWY 06L-ELEV **168 ft**

JUNGWON APP	134.0	265.75
CHEONGJU TWR	118.7	126.2
	236.6	249.6

CHEONGJU/Cheongju INTL
PAR
RWY 06L

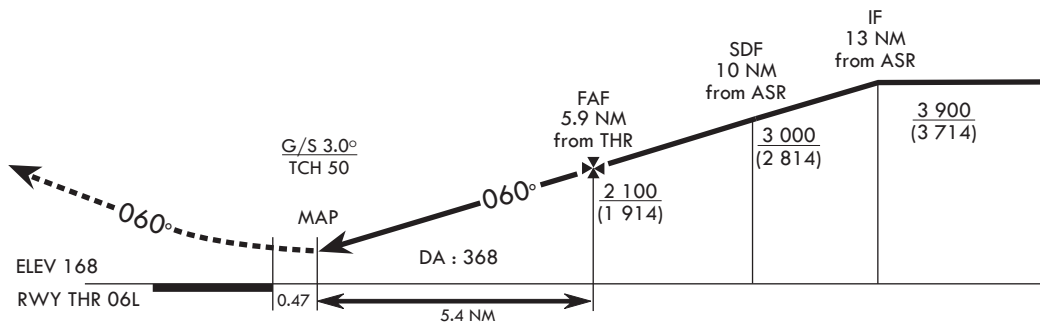
Note : Approach and circling-to-land under U.S.TERPS



MISSED APPROACH

Climb on heading 060 to 6 000 ft.

TRANSITION ALT 14 000
 TRANSITION LVL FL 140



CATEGORY	A	B	C	D
S-PAR 06L	368/24 200 (200 - 1/2)			
When ALS inop, increase vis 1/4 mile.				
CIRCLING	N/A			

MAPCH Climb Rate to 6 000

KNOTS	60	120	180	240	300
V/V(fpm)	380	760	1 140	1 520	1 900

Change : Withdrawal of A815.

INTENTIONALLY

LEFT

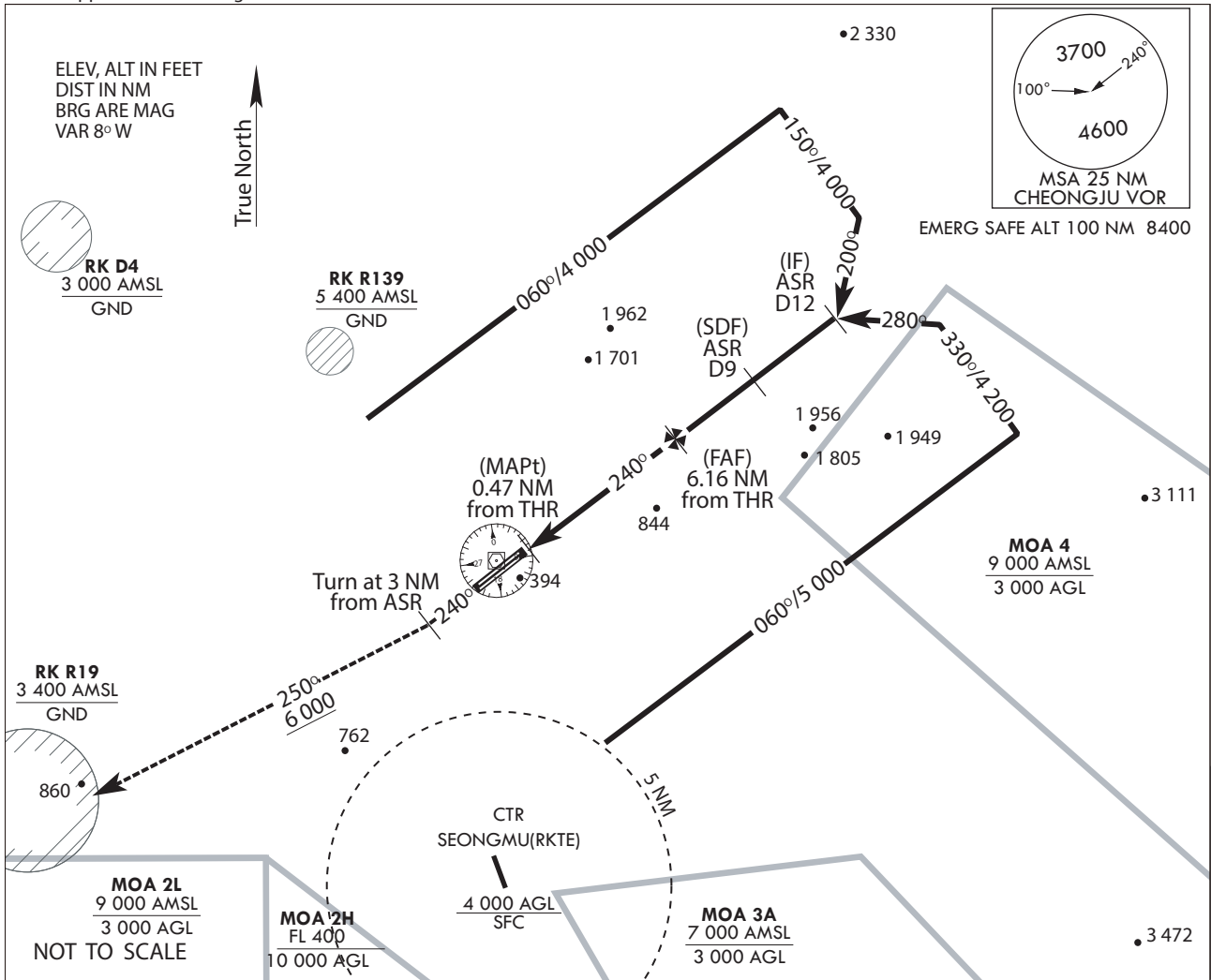
BLANK

INSTRUMENT APPROACH CHART
 AERODROME ELEV 192 ft
 HEIGHTS RELATED TO THE RWY 24R-ELEV 186 ft

JUNGWON APP	134.0	265.75
CHEONGJU TWR	118.7	126.2
	236.6	249.6

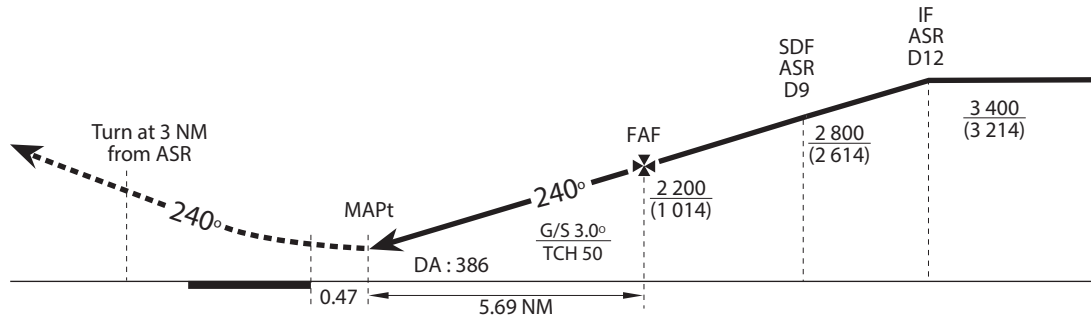
CHEONGJU/Cheongju INTL
PAR RWY 24R

Note : Approach and circling-to-land under U.S.TERPS



MISSED APPROACH
 Climb heading 240° to 3 NM
 then right heading 250° to 6 000.

TRANSITION ALT	14 000
TRANSITION LVL	FL 140



CATEGORY	A	B	C	D	Missed APP climb rate						
					KNOTS	60	120	180	240	300	TO
S-PAR	386/24 200 (200 - 1/2)				380	760	1 140	1 520	1 900	6 000	
When ALS inop, increase vis 1/4 mile.					V/V(fpm)	380	760	1 140	1 520	1 900	6 000

Change : Withdrawal of A815.

INTENTIONALLY

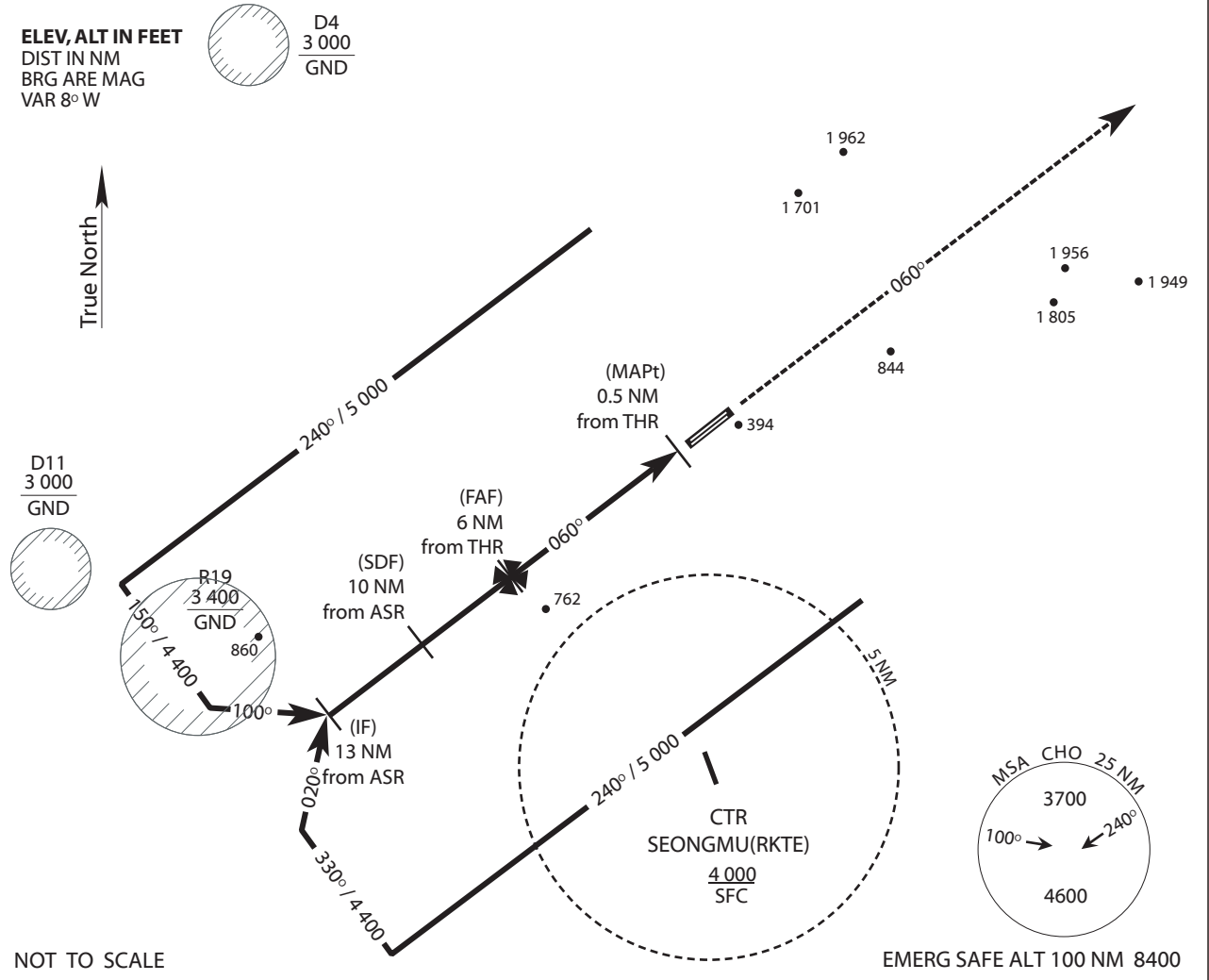
LEFT

BLANK

INSTRUMENT APPROACH CHART
AERODROME ELEV 192 ft
HEIGHTS RELATED TO THE RWY 06L-ELEV 168 ft
Note : Approach and circling-to-land under U.S.TERPS

JUNGWON APP	134.0	265.75
CHEONGJU TWR	118.7	126.2
	236.6	249.6

CHEONGJU/Cheongju INTL
ASR
RWY 06L

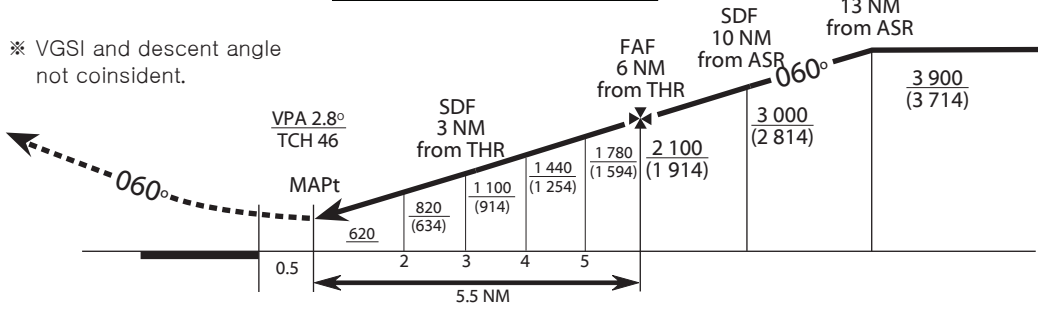


NOT TO SCALE

EMERG SAFE ALT 100 NM 8400

MISSED APPROACH
Climb on heading 060 to 6 000 ft.

TRANSITION ALT 14 000
TRANSITION LVL FL 140



CATEGORY	A	B	C	D	E
S-ASR 06L	620/24 452 (500 - 1/2)		620/40 452 (500-3/4)		620/50 452 (500 - 1)
When ALS inop, increase vis 1/2 mile.					
CIRCLING	780-1 588 (600-1)	820-1 628 (700-1)	820-1 3/4 628 (700-1 3/4)	1 200-3 1 008 (1 100-3)	1 220-3 1 028 (1 100-3)
CAT "E" acct circling not authorized SE of RWY 06-24.					

MAPCH Climb Rate to 6 000					
KNOTS	60	120	180	240	300
V/V(fpm)	380	760	1 140	1 520	1 900

Change : Withdrawal of A815.

INTENTIONALLY

LEFT

BLANK

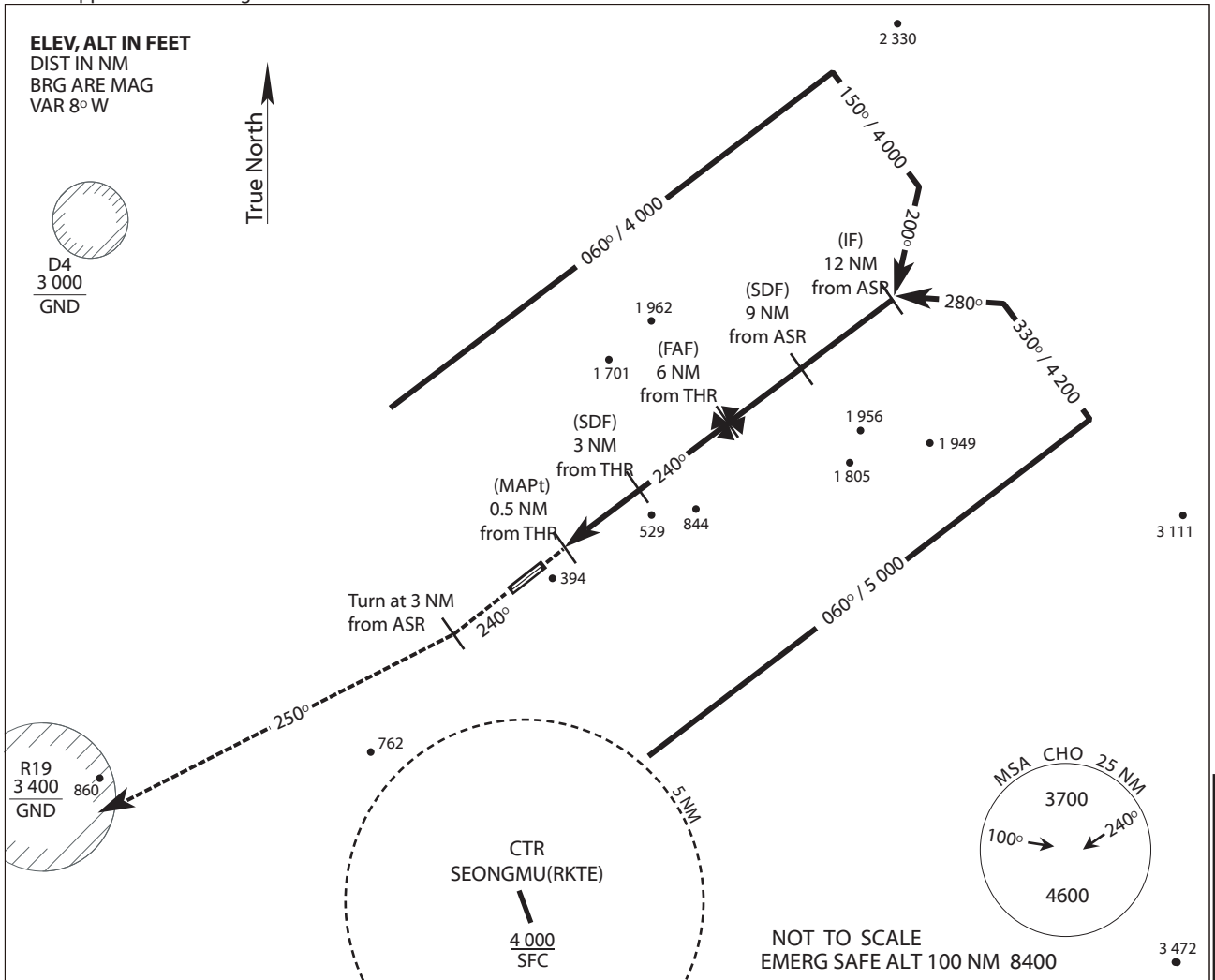
INSTRUMENT APPROACH CHART

AERODROME ELEV 192 ft
HEIGHTS RELATED TO THE RWY 24R-ELEV 186 ft

JUNGWON APP	134.0	265.75
CHEONGJU TWR	118.7	126.2
	236.6	249.6

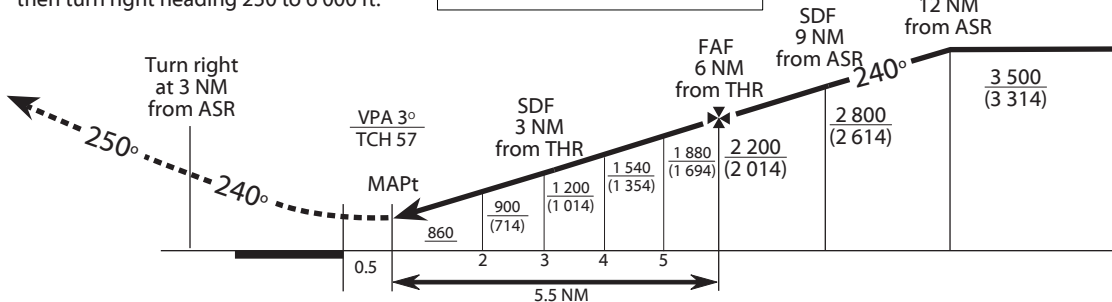
CHEONGJU/Cheongju INTL ASR RWY 24R

Note : Approach and circling-to-land under U.S.TERPS



MISSED APPROACH
Climb on heading 240 to 3 NM ft ASR
then turn right heading 250 to 6 000 ft.

TRANSITION ALT 14 000
TRANSITION LVL FL 140



CATEGORY	A	B	C	D	E
S-ASR 24R	860/24 674 (700 - 1/2)		860-1 1/2 674 (700-1 1/2)	860-1 3/4 674 (700-1 3/4)	860-2 674 (700-2)

When ALS inop, increase vis 1/2 mile.

CIRCLING	A	B	C	D	E
	860-1 668 (700-1)	860-2 668 (700-2)	1 200-3 1 008 (1 100-3)	1 320-3 1 28 (1 200-3)	

CAT "E" acft circling not authorized SE of RWY 24-6.

MAPCH Climb Rate to 6 000

KNOTS	60	120	180	240	300
V/V(fpm)	380	760	1 140	1 520	1 900

Change : Withdrawal of A815.

INTENTIONALLY

LEFT

BLANK

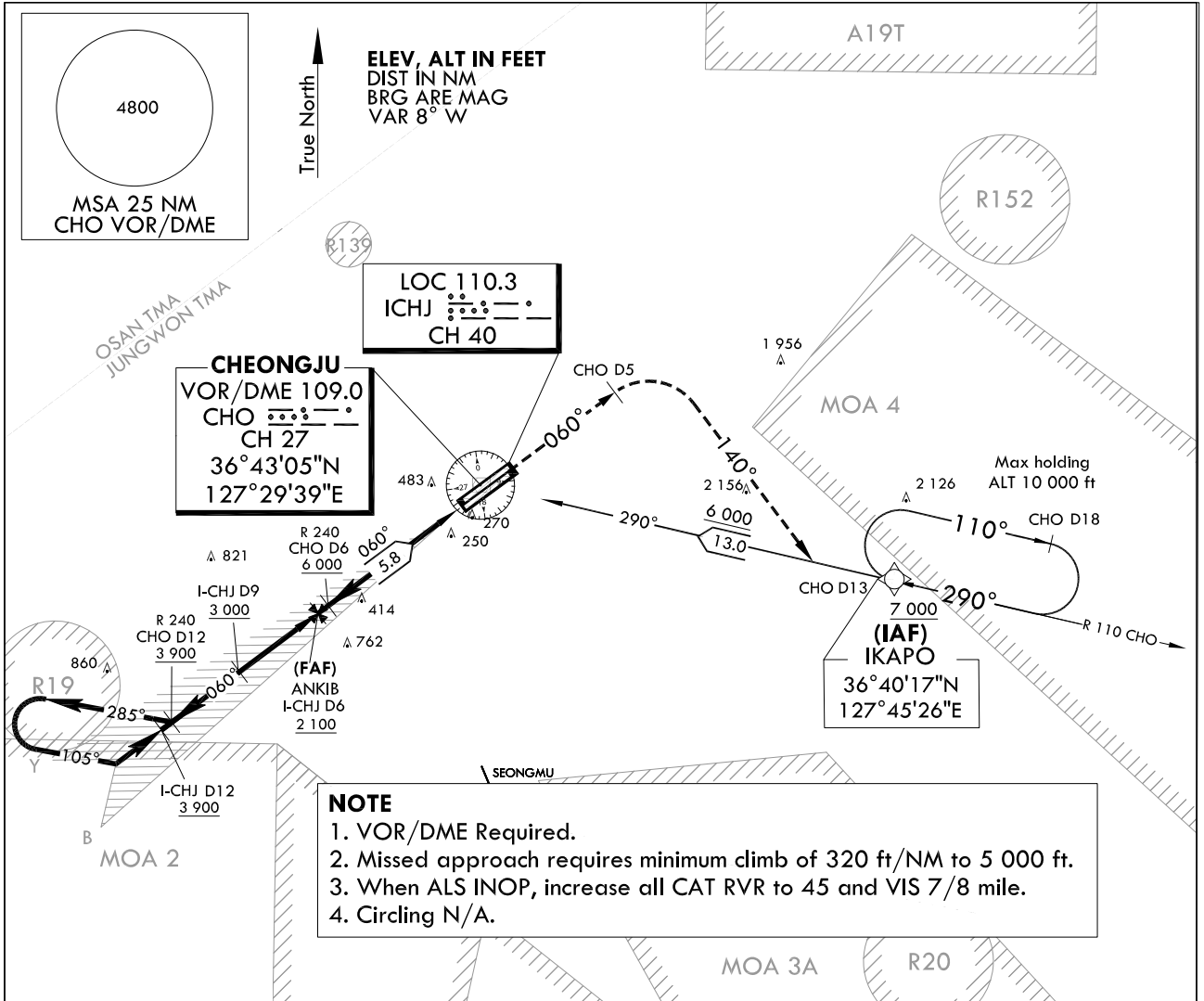
INSTRUMENT APPROACH CHART

AERODROME ELEV 192 ft
HEIGHTS RELATED TO
THR RWY 06L - ELEV 167 ft

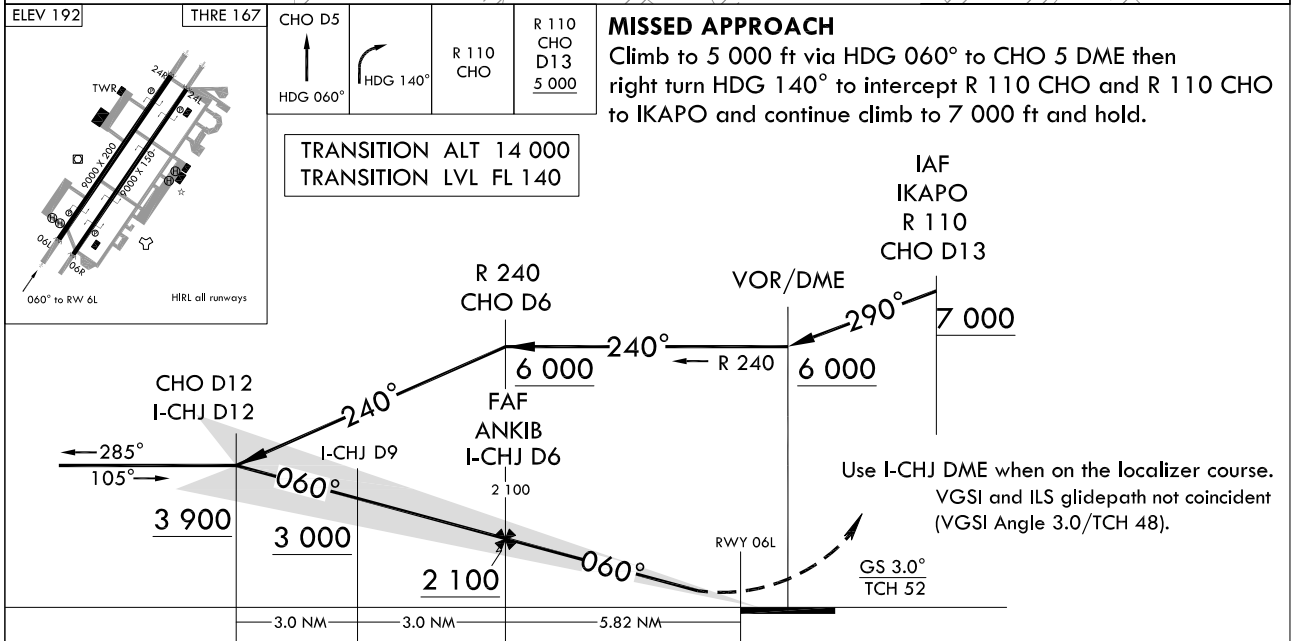
JUNGWON APP 134.0 134.1
134.4
CHEONGJU TWR 118.7 126.2

CHEONGJU/Cheongju Intl(RKTU)
ILS Y
RWY 06L

Note : Approach under circling-to land under U.S. TERPS.



NOTE
1. VOR/DME Required.
2. Missed approach requires minimum climb of 320 ft/NM to 5 000 ft.
3. When ALS INOP, increase all CAT RVR to 45 and VIS 7/8 mile.
4. Circling N/A.



CATEGORY		A	B	C	D	E
S-ILS 06L	ALS		367/40	200(200- $\frac{3}{4}$)		N/A
	ALS INOP		367/45	200(200- $\frac{7}{8}$)		N/A

Change : Information of fix names(NOSON → IKAPO, HOMME → ANKIB).

CHEONGJU/Cheongju Intl(RKTU)
ILS Y
RWY 06L

AERONAUTICAL DATA TABULATION

ILS Approach to RWY 06L			
Fix/Point		Coordinates	
IKAPO	R 110 CHO/13.00 NM CHO	36°40'16.6"N	127°45'26.2"E
CHO VOR/DME	-	36°43'04.9"N	127°29'38.7"E
D6 CHO	R 240 CHO/6.00 NM CHO	-	
D12 ICHJ	BRG 60.11°/12.00 NM ICHJ	36°35'21.9"N	127°17'33.6"E
D9 ICHJ	BRG 60.11°/9.00 NM ICHJ	36°37'12.1"N	127°20'30.5"E
ANKIB	-	36°39'02.7"N	127°23'28.6"E
RWY 06L THR	-	36°42'36.12"N	127°29'12.42"E
D5 CHO	BRG 60.11°/5.00 NM CHO	36°46'00.1"N	127°34'42.0"E
R 110 CHO	-	-	
IKAPO	R 110 CHO/13.00 NM CHO	36°40'16.6"N	127°45'26.2"E

Change : Information of fix names(NOSON → IKAPO, HOMME → ANKIB).

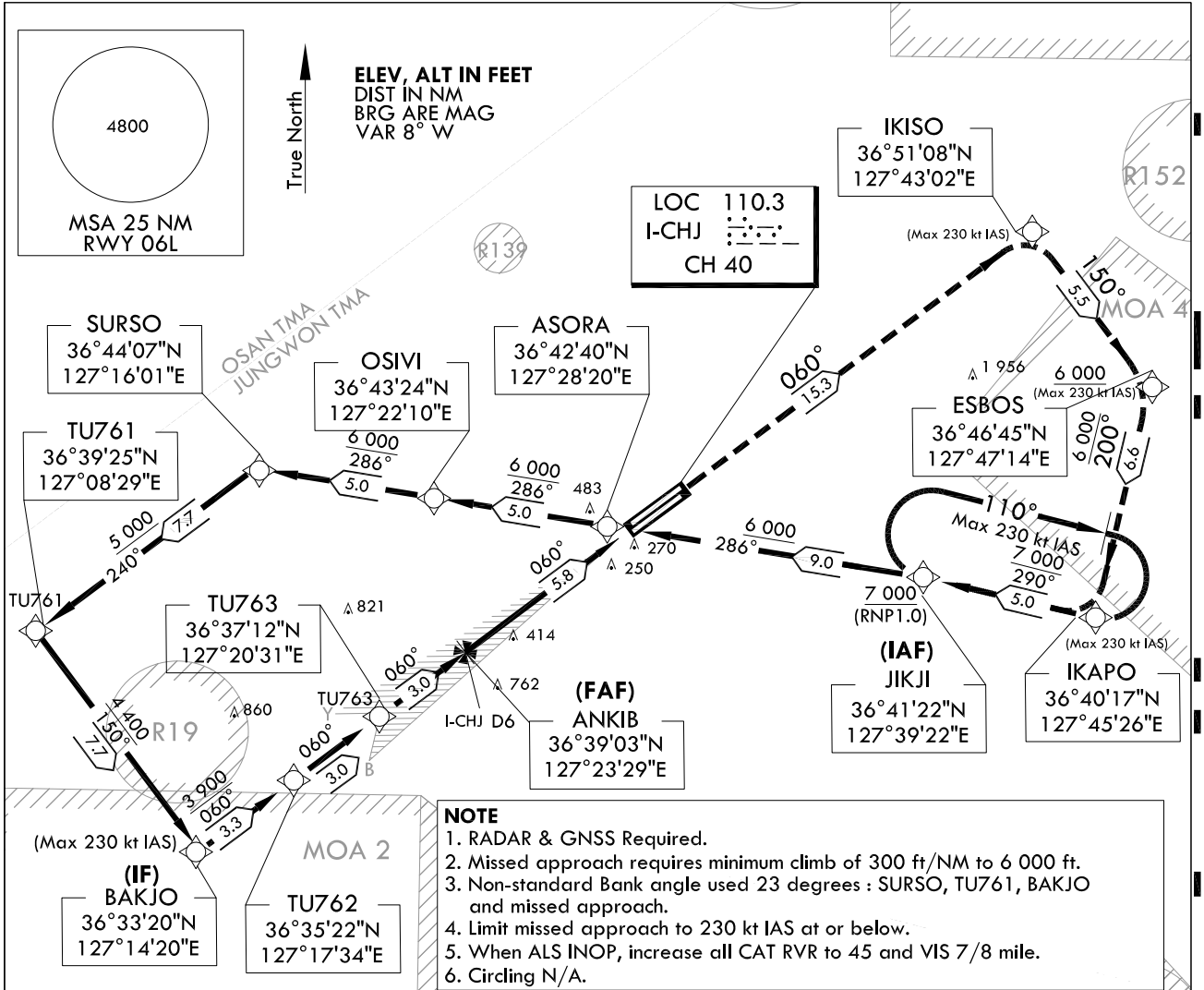
INSTRUMENT APPROACH CHART

AERODROME ELEV 192 ft
HEIGHTS RELATED TO
THR RWY 06L - ELEV 167 ft

JUNGWON APP 134.0 134.1
134.4
CHEONGJU TWR 126.2 118.7

CHEONGJU/Cheongju Intl(RKTU)
ILS Z
RWY 06L

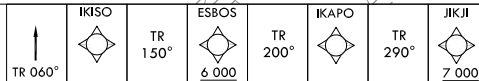
Note : Approach under circling-to land under U.S. TERPS.



NOTE

1. RADAR & GNSS Required.
2. Missed approach requires minimum climb of 300 ft/NM to 6 000 ft.
3. Non-standard Bank angle used 23 degrees : SURSO, TU761, BAKJO and missed approach.
4. Limit missed approach to 230 kt IAS at or below.
5. When ALS INOP, increase all CAT RVR to 45 and VIS 7/8 mile.
6. Circling N/A.

TRANSITION ALT 14 000
TRANSITION LVL FL 140

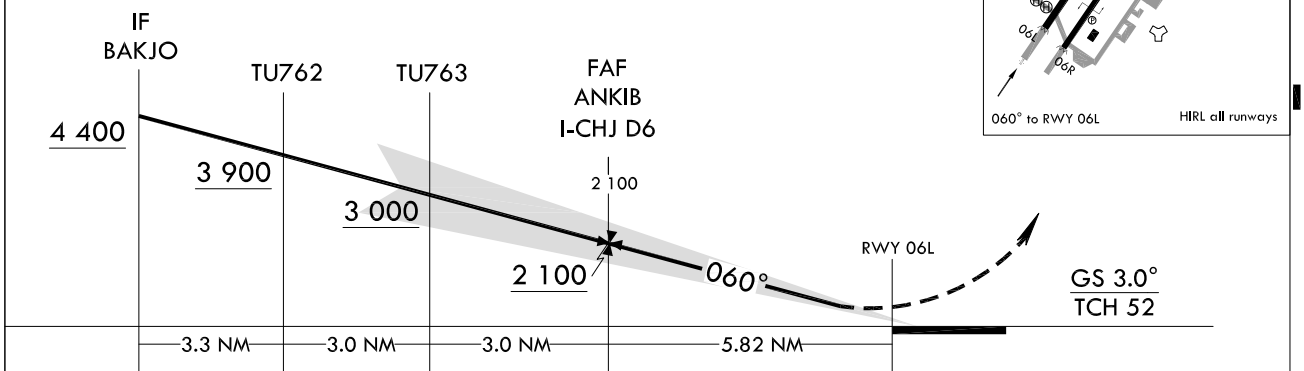


MISSED APPROACH

Climb to 6 000 ft via on track 060° to IKISO, then track 150° to cross ESBOB at or above 6 000 ft, then track 200° to IKAPO, then track 290° to cross JIKJI at or above 7 000 ft and hold.

Use I-CHJ DME when on the localizer course.

VGSI and ILS glidepath not coincident (VGSI Angle 3.0/TCH 48).



CATEGORY		A	B	C	D	E
S-ILS 06L	ALS		367/40	200(200- $\frac{3}{4}$)		N/A
	ALS INOP		367/45	200(200- $\frac{7}{8}$)		N/A

Change : Information of fix names.

CHEONGJU/Cheongju Intl(RKTU)
ILS Z
RWY 06L

AERONAUTICAL DATA TABULATION

ILS Approach to RWY 06L			
Fix/Point		Coordinates	
JIKJI (IAF)	-	36°41'21.7"N	127°39'22.1"E
ASORA	-	36°42'40.4"N	127°28'19.6"E
OSIVI	-	36°43'23.8"N	127°22'10.3"E
SURSO	R 283 CHO/11.00 NM CHO	36°44'06.8"N	127°16'01.0"E
TU761	-	36°39'25.0"N	127°08'29.0"E
BAKJO	-	36°33'20.1"N	127°14'19.6"E
TU762	-	36°35'21.9"N	127°17'33.6"E
TU763	-	36°37'12.1"N	127°20'30.5"E
ANKIB	-	36°39'02.7"N	127°23'28.6"E
RWY 06L THR	-	36°42'36.12"N	127°29'12.42"E
IKISO	-	36°51'08.3"N	127°43'01.8"E
ESBOS	-	36°46'44.7"N	127°47'14.2"E
IKAPO	R 110 CHO/13.00 NM CHO	36°40'16.6"N	127°45'26.2"E
JIKJI	-	36°41'21.7"N	127°39'22.1"E

Change : Information of fix names.

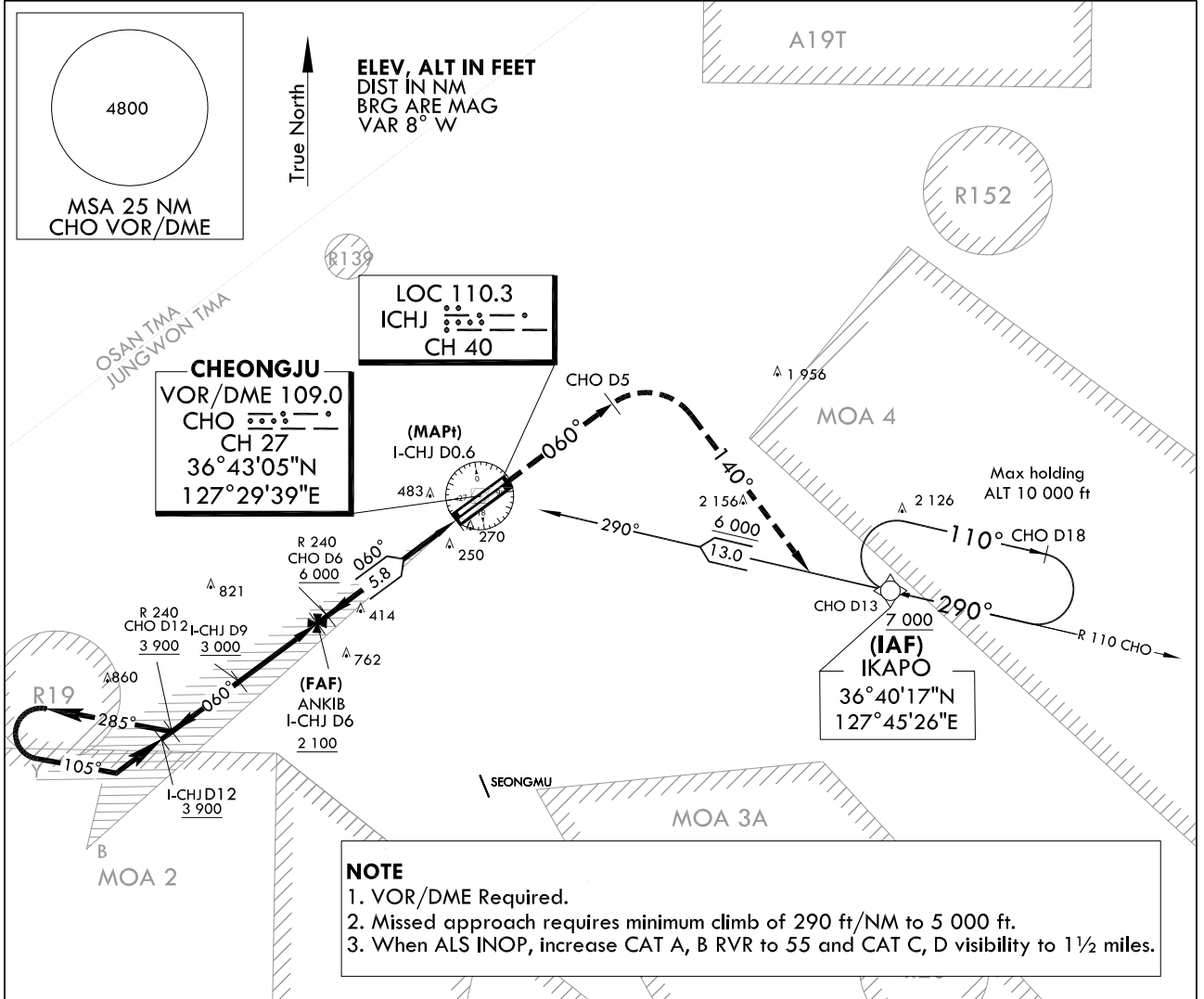
**INSTRUMENT
APPROACH
CHART**

AERODROME ELEV 192 ft
HEIGHTS RELATED TO
THR RWY 06L - ELEV 167 ft

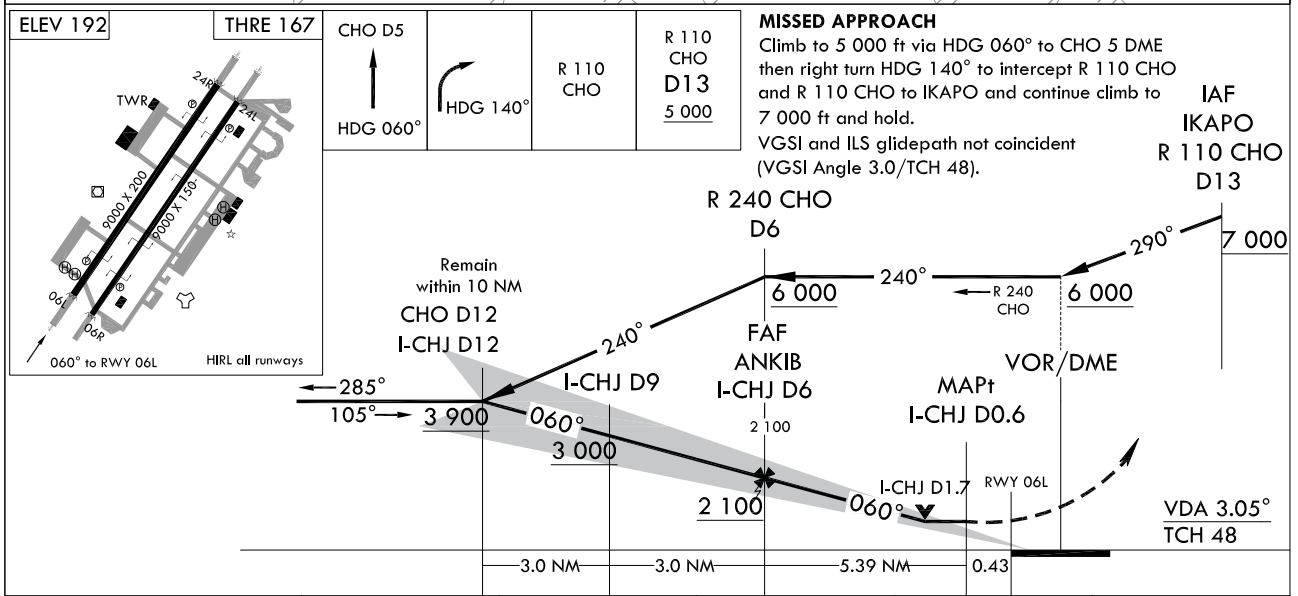
JUNGWON APP 134.0 134.1
134.4
CHEONGJU TWR 126.2 118.7

CHEONGJU/Cheongju Intl(RKTU)
LOC/DME Y
RWY 06L

Note : Approach under circling-to land under U.S. TERPS.



NOTE
1. VOR/DME Required.
2. Missed approach requires minimum climb of 290 ft/NM to 5 000 ft.
3. When ALS INOP, increase CAT A, B RVR to 55 and CAT C, D visibility to 1 1/2 miles.



CATEGORY		A	B	C	D	E
S-LOC 06L	ALS	700/40 533(600-3/4)		700-1 1/4 533(600-1 1/4)		N/A
	ALS INOP	700/55 533(600-1)		700-1 1/2 533(600-1 1/2)		N/A
CIRCLING		880-1 688(700-1)		1 200-3 1 008(1 100-3)	2 000-3 1 808(1 900-3)	N/A

Change : Information of fix names(NOSON → IKAPO, HOMME → ANKIB).

CHEONGJU/Cheongju Intl(RKTU)
LOC/DME
RWY 06L

AERONAUTICAL DATA TABULATION

LOC/DME Approach to RWY 06L from LOC/DME			
Fix/Point		Coordinates	
IKAPO	R 110 CHO/13.00 NM CHO	36°40'16.6"N	127°45'26.2"E
CHO VOR/DME	-	36°43'04.9"N	127°29'38.7"E
D6 CHO	R 240 CHO/6.00 NM CHO	-	
D12 ICHJ	BRG 60.11°/12.00 NM ICHJ	36°35'21.9"N	127°17'33.6"E
D9 ICHJ	BRG 60.11°/9.00 NM ICHJ	36°37'12.1"N	127°20'30.5"E
ANKIB	-	36°39'02.7"N	127°23'28.6"E
D0.6 ICHJ	0.6 NM ICHJ	-	
D5 CHO	BRG 60.11°/5.00 NM CHO	36°46'00.1"N	127°34'42.0"E
R 110 CHO	-	-	
IKAPO	R 110 CHO/13.00 NM CHO	36°40'16.6"N	127°45'26.2"E

Change : Information of fix names(NOSON → IKAPO, HOMME → ANKIB).

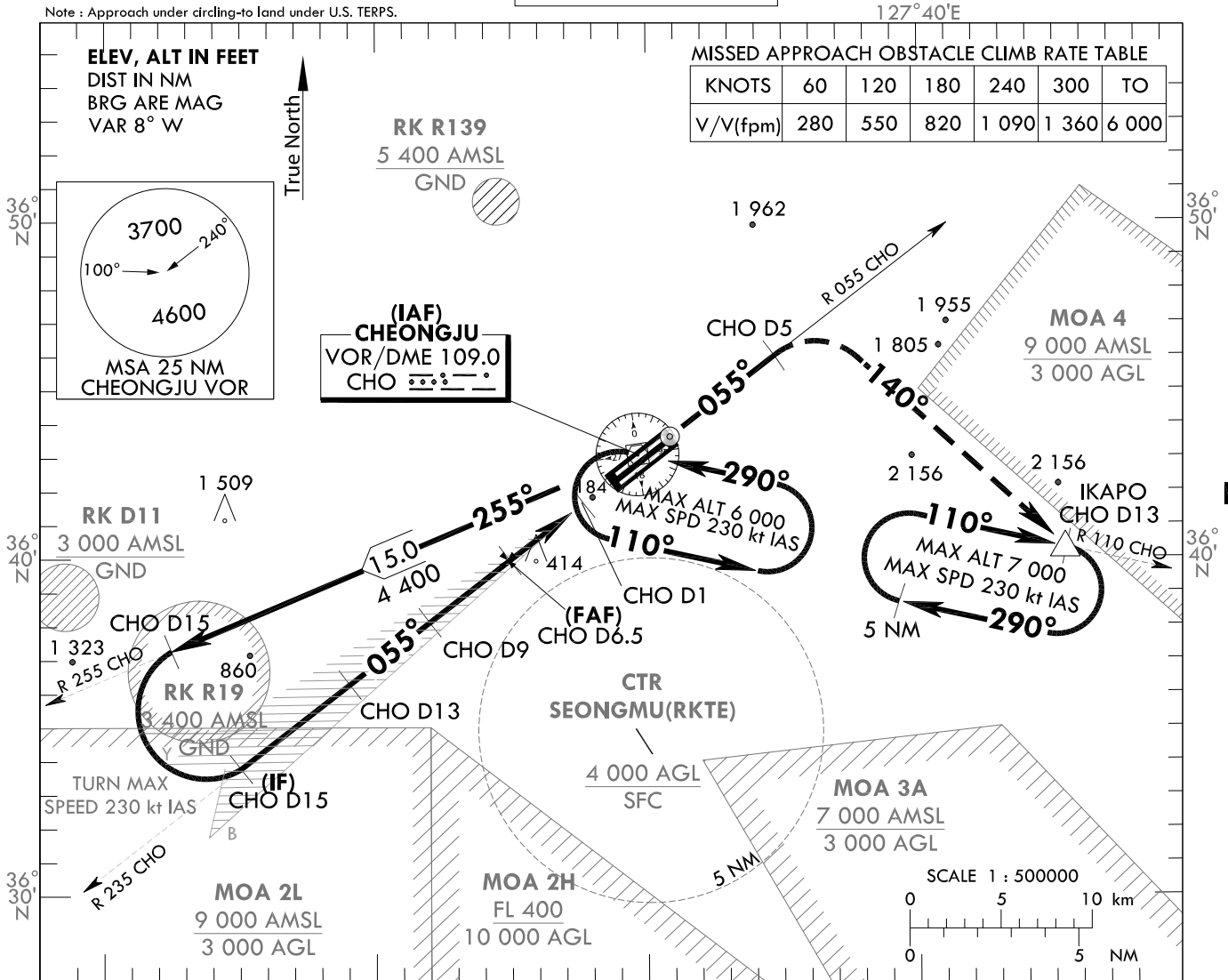
**INSTRUMENT
APPROACH
CHART**

AERODROME ELEV 192 ft
HEIGHTS RELATED TO
THR RWY 06L - ELEV 168 ft

JUNGWON APP	134.0	265.75
CHEONGJU TWR	126.2	118.7
	236.6	249.6

CHEONGJU/Cheongju Intl(RKTU)
VOR/DME
RWY 06L

Note : Approach under circling-to land under U.S. TERPS.

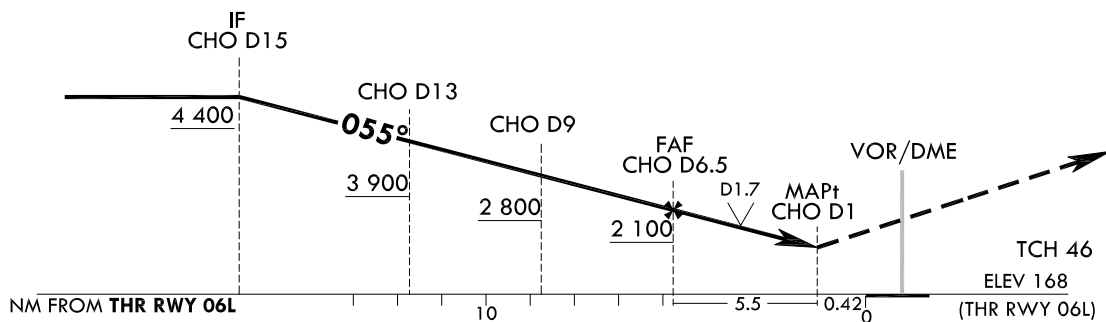


MISSED APPROACH

Climb to 7 000 ft, via HDG 055° to CHO D5, then right turn HDG 140°, then direct to IKAPO and hold.

TRANSITION ALT 14 000
TRANSITION LVL FL 140

* When ALS INOP, increase CAT A, B RVR to 50 and VIS to 1 mile, CAT C VIS to 1½ miles, CAT D VIS to 1¾ miles.



CATEGORY	A	B	C	D
S-VOR/DME	700/24 532(600-½)		700/50 532(600-1)	700/60 532(600-1¼)
CIRCLING	780-1 588(600-1)	820-1 628(700-1)	820-1¾ 628(700-1¾)	1200-3 1 008(1 100-3)

Change : Information of fix name(NOSON → IKAPO).

INTENTIONALLY

LEFT

BLANK

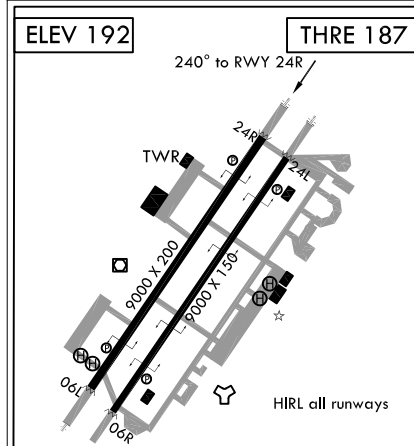
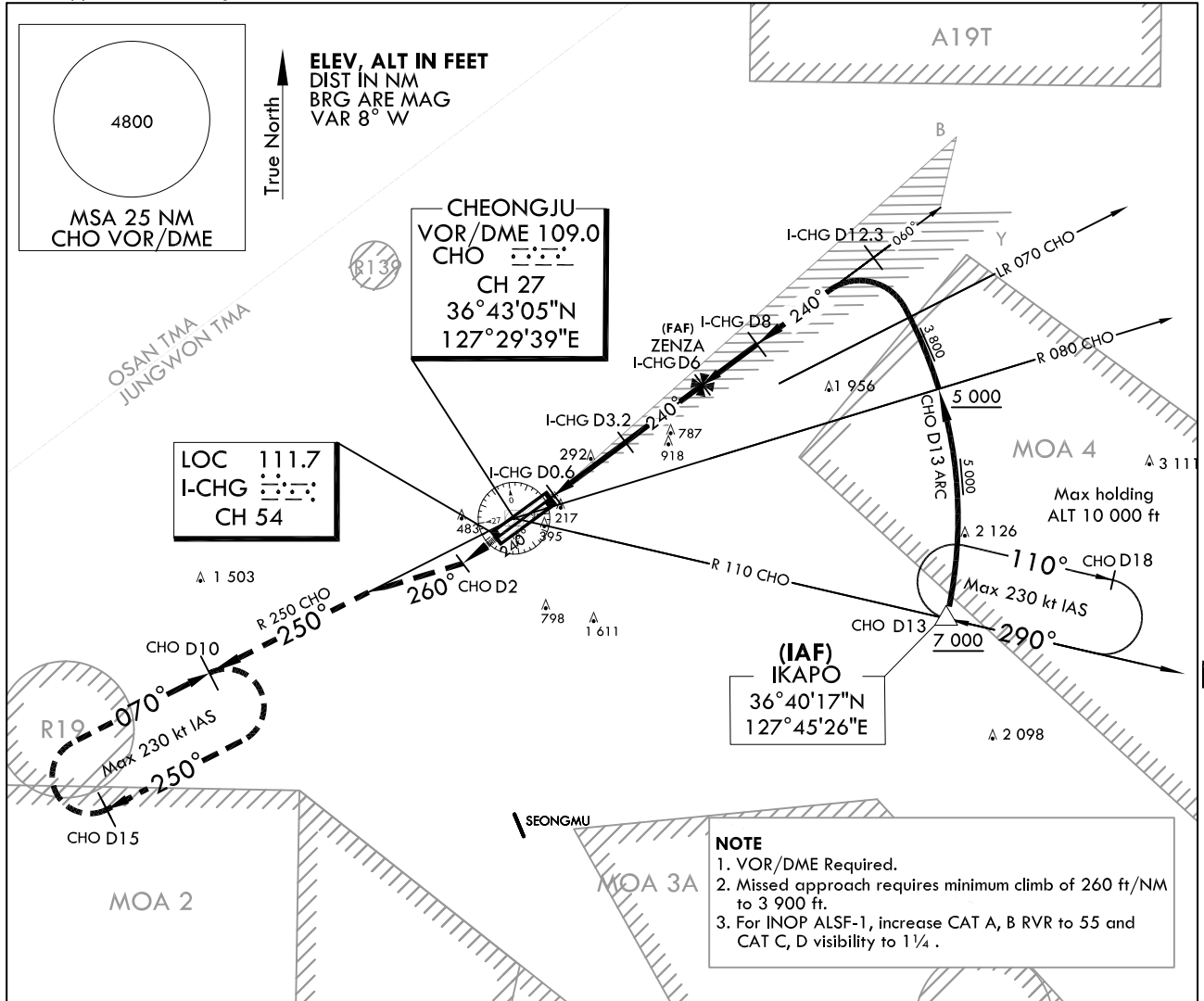
**INSTRUMENT
APPROACH
CHART**

AERODROME ELEV 192 ft
HEIGHTS RELATED TO
THR RWY 24R - ELEV 187 ft

JUNGWON APP 134.0 134.1 134.4
CHEONGJU TWR 118.7 126.2

**CHEONGJU/Cheongju INTL(RKTU)
LOC/DME Y
RWY 24R**

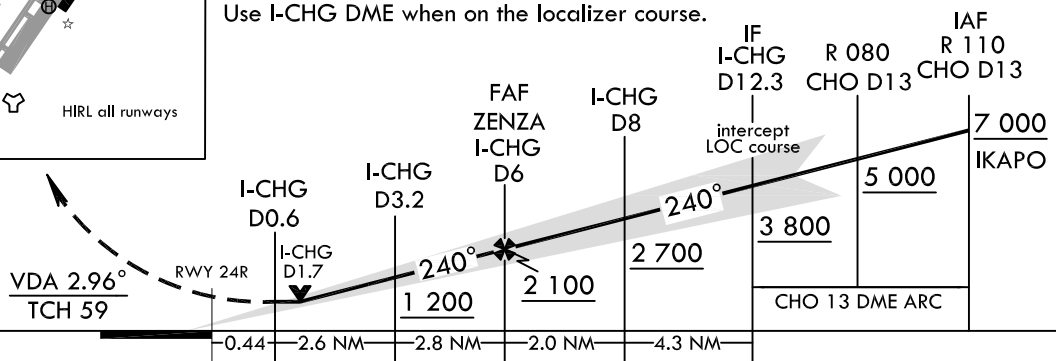
Note : Approach and circling - to land under U.S. TERPS.



MISSED APPROACH

Climb to 6 000 ft via HDG 240° to CHO 2 DME, then right turn HDG 260° to intercept R 250 CHO and R 250 CHO to 10 DME and continue climb to 6 000 ft and hold.

Use I-CHG DME when on the localizer course.



CATEGORY		A	B	C	D	E
S-LOC 24R	ALS	620/24	433(500- $\frac{1}{2}$)	620/40	433(500- $\frac{3}{4}$)	N/A
	ALS INOP	620/55	433(500-1)	620-1 $\frac{1}{4}$	433(500-1 $\frac{1}{4}$)	N/A
CIRCLING		880-1	688(700-1)	1 200-3	1 808(1 900-3)	N/A

Change : Information of fix name(NOSON → IKAPO).

INTENTIONALLY

LEFT

BLANK

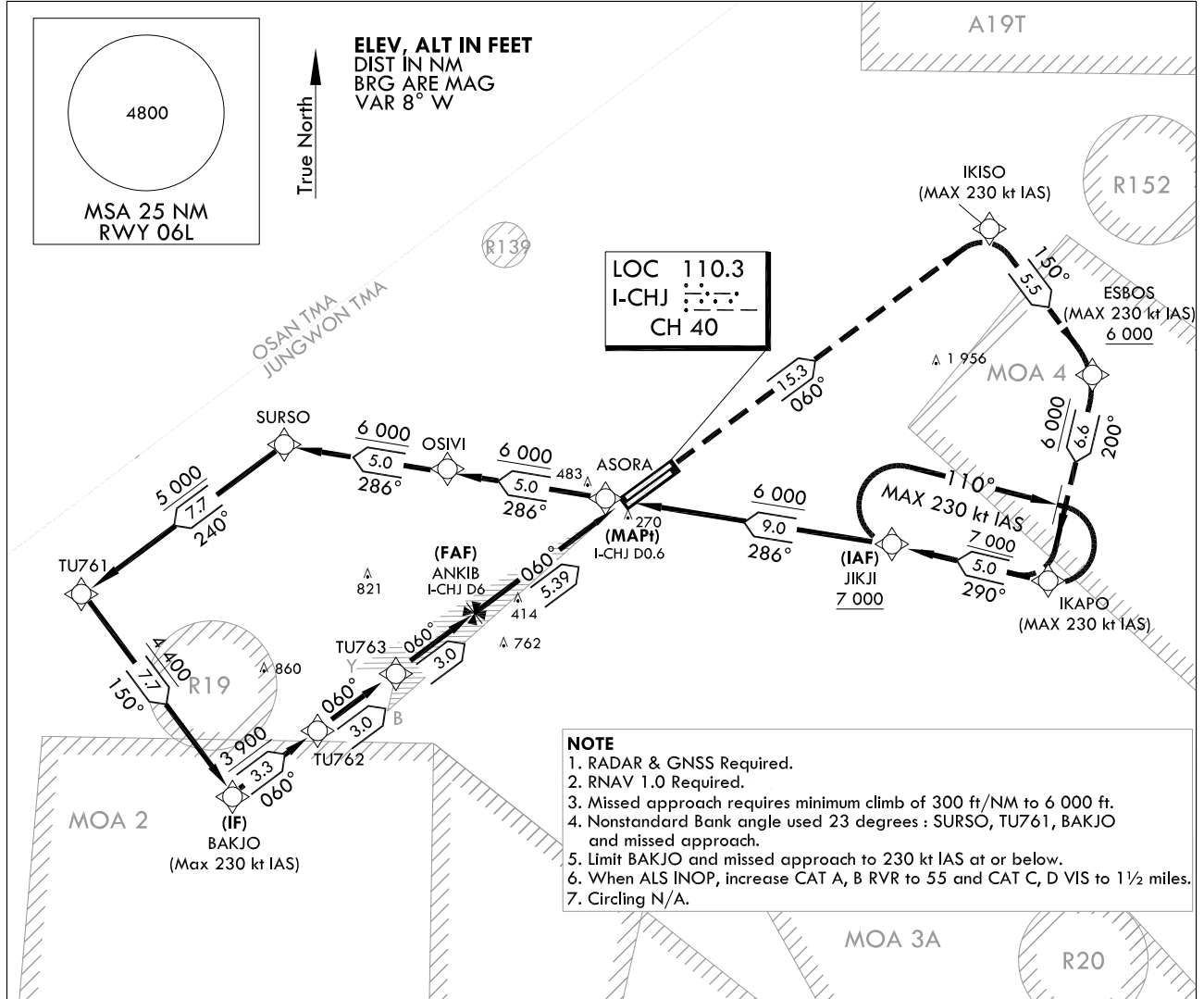
**INSTRUMENT
APPROACH
CHART**

AERODROME ELEV 192 ft
HEIGHTS RELATED TO
THR RWY 06L - ELEV 187 ft

JUNGWON APP 134.0 134.1 134.4
CHEONGJU TWR 118.7 126.2

CHEONGJU/Cheongju INTL(RKTU)
LOC/DME Z
RWY 06L

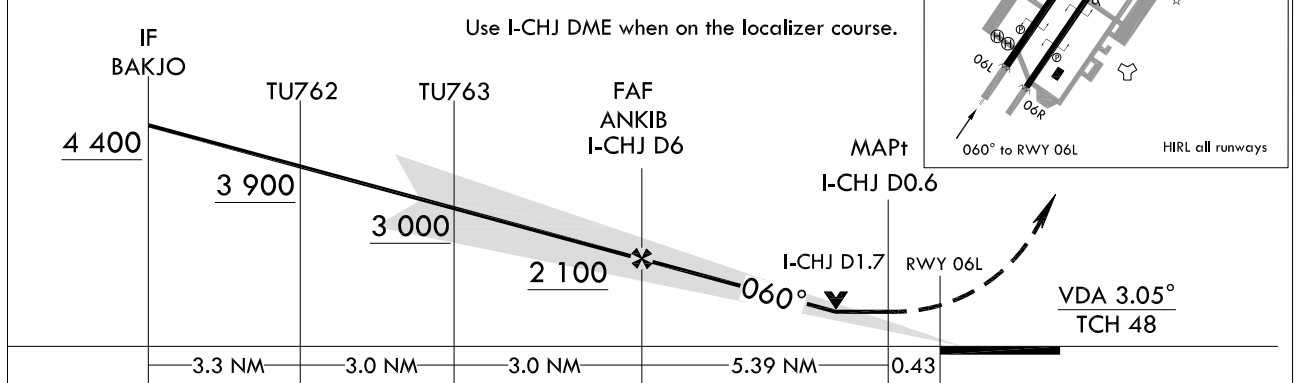
Note : Approach and circling - to land under U.S. TERPS.



- NOTE**
1. RADAR & GNSS Required.
 2. RNAV 1.0 Required.
 3. Missed approach requires minimum climb of 300 ft/NM to 6 000 ft.
 4. Nonstandard Bank angle used 23 degrees : SURSO, TU761, BAKJO and missed approach.
 5. Limit BAKJO and missed approach to 230 kt IAS at or below.
 6. When ALS INOP, increase CAT A, B RVR to 55 and CAT C, D VIS to 1 1/2 miles.
 7. Circling N/A.

	IKISO	ESBOS	IKAPO	JIKJI
TR 060°	TR 150°	TR 200°	TR 290°	
	6 000		7 000	

MISSED APPROACH
Climb to 6 000 ft via on track 060° to IKISO, then track 150° to cross ESBOS at or above 6 000 ft, then track 200° to IKAPO, then track 290° to cross JIKJI at or above 7 000 ft and hold.



CATEGORY		A	B	C	D	E
S-LOC 06L	ALS	700/40	533(600-3/4)	700-1 1/4	533(600-1 1/4)	N/A
	ALS INOP	700/55	533(600-1)	700-1 1/2	533(600-1 1/2)	N/A

Change : Information of fix names.

INTENTIONALLY

LEFT

BLANK

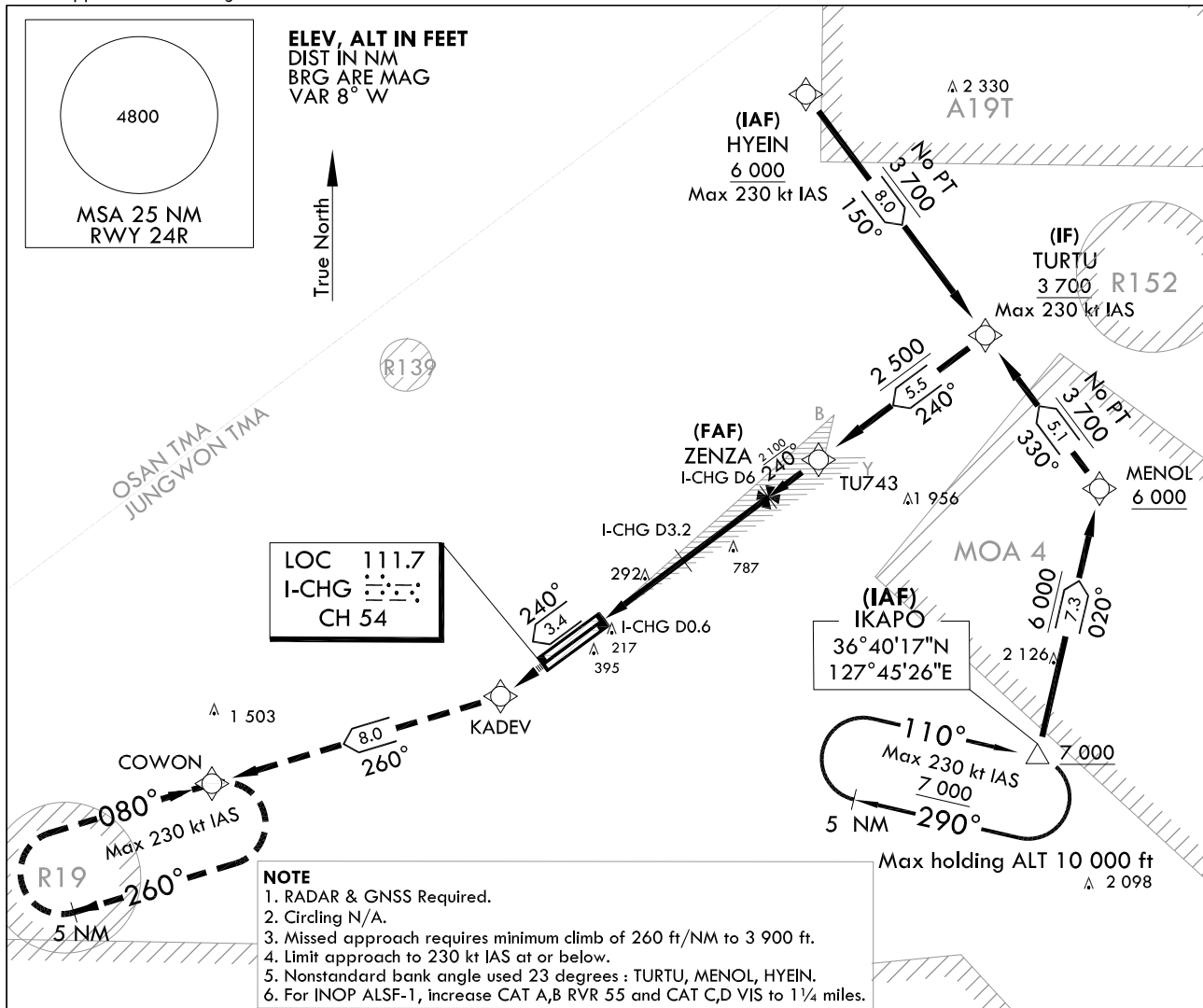
INSTRUMENT APPROACH CHART

AERODROME ELEV 192 ft
HEIGHTS RELATED TO
THR RWY 24R - ELEV 187 ft

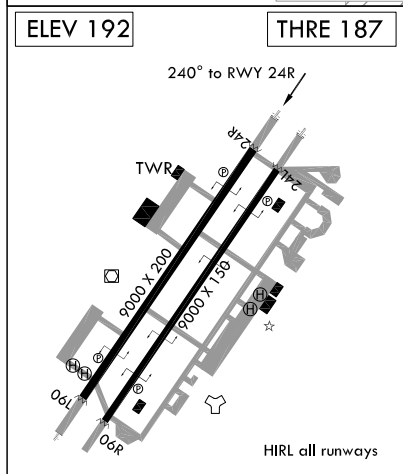
JUNGWON APP 134.0 134.1 134.4
CHEONGJU TWR 118.7 126.2

CHEONGJU/Cheongju INTL(RKTU)
LOC/DME Z
RWY 24R

Note : Approach and circling - to land under U.S. TERPS.



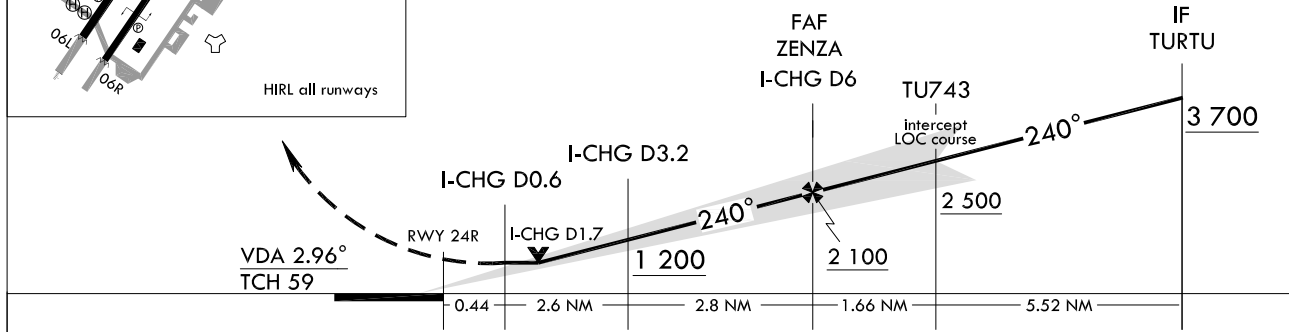
- NOTE**
1. RADAR & GNSS Required.
 2. Circling N/A.
 3. Missed approach requires minimum climb of 260 ft/NM to 3 900 ft.
 4. Limit approach to 230 kt IAS at or below.
 5. Nonstandard bank angle used 23 degrees : TURTU, MENOL, HYEIN.
 6. For INOP ALSF-1, increase CAT A,B RVR 55 and CAT C,D VIS to 1 1/4 miles.



ELEV 192	THRE 187	KADEV	COWON
		TR 240°	TR 260°

MISSED APPROACH
Climb to 6 000 ft via on track 240° to KADEV, then track 260° to COWON, then continue climb to 6 000 ft and hold.

Use I-CHG DME when on the localizer course.



CATEGORY		A	B	C	D	E
S-LOC 24R	ALS	620/24	433(500-1/2)	620/40	433(500-3/4)	N/A
	ALS INOP	620/55	433(500-1)	620-1 1/4	433(500-1 1/4)	N/A

Change : Information of fix names(NOSON → IKAPO, BESAL → TURTU, JUDDI → KADEV).

INTENTIONALLY

LEFT

BLANK